



RÉPUBLIQUE
FRANÇAISE

*Liberté
Égalité
Fraternité*



WELCOME GUIDE FOR INTERNATIONAL STUDENTS

UNIVERSITE BRETAGNE SUD

Université
Bretagne Sud
ubs:



Erasmus+

Projet financé avec le soutien de la Commission européenne. Cette publication n'engage que son auteur et la Commission n'est pas responsable de l'usage qui pourrait être fait des informations qui y sont contenues.

www.univ-ubs.fr

Dear prospective student,

Thank you for choosing to study at the University of South Brittany.
We are delighted!

You are about to join a human scale University that nurtures a real interest in people, in collective adventure and participatory progress. At UBS, we focus on the collective and each one of us will be pleased to welcome you.

You are about to start or to pursue your higher education in promising fields to acquire cutting-edge skills that will meet the needs of employers and that will also allow you to better understand the contemporary challenges facing our societies.

Finally, you are about to settle in a wonderful region, where you will discover well-established traditions, a unique heritage and splendid landscapes.

Throughout your curriculum at UBS, you will receive support not only from your teachers but also from your fellow students and the administrative and technical staff. Everyone is committed to seeing you succeed and become well-integrated. Be sure that each of us will work to help you and guide you to make the most of your experience at UBS.

I wish you a brilliant academic career and a pleasant stay in the Morbihan.

Prof. Christine Chauvin
Vice-President for International Relations

CONTENTS

CHAPTER 1 : DISCOVERING UBS	5
1.1 General presentation of the university	6
1.2 Faculties, Institutes and School	6
1.3 UBS Course catalogue	10
1.4 Organization of studies	11
CHAPITRE 2 : UBS SUPPORT SERVICES	13
2.1 The International Office - <i>Le Service des Affaires Internationales</i>	14
2.2 Student Health and Disability Prevention Centre - <i>Le Pôle Étudiant Prévention Santé & Handicap</i>	16
2.3 Studies and Career Counselling Services - <i>Le Service Universitaire d'Information d'Orientation et d'Insertion Professionnelle</i>	19
2.4 Sports Activities on offer at UBS - <i>Le Service Universitaire des Activités Physiques et Sportives</i>	19
2.5 UBS Language Centre - <i>Le Centre de Langues de l'Université Bretagne Sud</i>	19
CHAPITRE 3 : STUDENT LIFE	21
3.1 Information Technology at UBS	22
3.2 University Library - <i>La Bibliothèque Universitaire</i>	23
3.3 Music, Arts and Culture	24
3.4 The Student House - <i>La Maison des Étudiants</i>	25
3.5 Point of access to your Legal Rights - <i>Le Point d'Accès au Droit</i>	26
3.6 Youth Information Offices - <i>Les Bureaux Information Jeunesse</i>	27
CHAPITRE 4 : PREPARING FOR YOUR ARRIVAL AT UBS	29
4.1 Admission procedures	30
4.1.1 Exchange students	30
4.1.2 Individual students	30
4.2 Immigration procedures	33
4.3 How to finance your studies at UBS?	37
4.4 Scholarships for international student	37
4.5 Booking temporary accommodation	38
CHAPITRE 5 : COMING TO UBS	41
5.1 Coming by plane? Where to sleep near the airports?	42
5.2 Where to sleep in Paris?	42
5.3 How to get to Montparnasse railway station from a Paris Airport?	44
5.4 Getting to Lorient, Vannes or Pontivy from Paris	44
CHAPITRE 6 : ADMINISTRATIVE STEPS UPON YOUR ARRIVAL	47
6.1 Registration at UBS and the Student Life and Campus Contribution	48
6.1.1 Additional Information	49
6.2 Registration with Social Security	50
6.2.1 Additional Information	50
6.3 Finding Accommodation in Lorient, Pontivy or Vannes	52
6.3.1 Important Additional Information	54
6.4 Opening a bank account	55
6.5 Financial Assistance	55
6.6 VLS-TS visa validation	56
6.7 Apply for a Student Residence Permit online with ANEF- <i>séjour</i>	56
CHAPITRE 7 : DISCOVER BRITTANY	59
CHAPITRE 8 : EVERYDAY LIFE	63
8.1 Getting around	64
8.2 Working in France	66
8.3 French eating habits and food prices	67
8.4 Practicing your religion	69
FRENCH-ENGLISH LEXICON	71
EMERGENCY NUMBERS	77



Faculté
langues
humaines et
sociales

ubs:

Université Bretagne Sud
Skol-veur Kreisteiz Breizh

Paquebot

CHAPTER 1
DISCOVERING UBS



1.1 GENERAL PRESENTATION OF THE UNIVERSITY

Founded in 1995, UBS has always been a major social advancement advocate and venue for lifelong learning for the regional population, and a major contributor to local economic and cultural development. Multidisciplinary, modern and innovating, UBS is constantly growing and adapting to the needs of local industries and services.

Due to its proximity to its students and to its cultural and economic partners, UBS provides wider access to tertiary education and sets students onto successful and meaningful careers. 90 % of students are employed within 18 months of their graduation.

UBS is ideally located between the sea and land. It has two main campuses, Lorient and Vannes on the coast and one inland in Pontivy.

LORIENT

27, rue Armand Guillemot
CS 7030
56321 Lorient cedex
Phone number:
+33(0)2.97.87.66.66
Opening hours:
Monday to Friday
9 am to 7 pm

VANNES

Campus de Tohannic
Rue André Lwoff
56017 Vannes cedex
Phone number:
+33(0)2.97.01.70.70
Opening hours:
Monday to Friday
9 am to 6:30 pm

PONTIVY

Allée des Pommiers
56300 Pontivy
Phone number:
+33(0)2.97.27.67.70
Opening hours:
Monday to Friday
9 am to 6:30 pm

1.2 FACULTIES, INSTITUTES AND SCHOOL

The University has three faculties, two Institutes of Technology and one School of Engineering.



FACULTY OF ARTS, HUMANITIES AND SOCIAL SCIENCES



[Click here for more information on the Faculty of Arts, Humanities and Social Sciences](#)



BACHELOR DEGREES

- ▶ History
- ▶ Modern literature
- ▶ Languages:
 - International trade
 - European communication and exchange
- ▶ Trilingual Import-Export Commercial Assistant (Professional Degree)
- ▶ Foreign and Regional Languages, Literatures and Civilisations English/Spanish

MASTERS

- ▶ History, Civilisations and Heritage
- ▶ Geography, urban planning and development of coastal areas
- ▶ Book and Publishing Professions
- ▶ Regional and European Project Management (French German Czech tridegree)
- ▶ International Business Development Manager (Professional Master)
- ▶ Languages, Literatures and Civilisations



FACULTY OF SCIENCES AND ENGINEERING SCIENCES



[Click here for more information on the Faculty of Sciences and Engineering Sciences](#)



BACHELOR DEGREES

- ▶ Mathematics
- ▶ Computer Sciences
- ▶ Life and Earth Sciences
- ▶ Ecology and Society Sciences
- ▶ Engineering Sciences

MASTERS

- ▶ Biotechnology
 - Chemical ecology
- ▶ Computer Sciences
- ▶ Design Engineering
- ▶ Complex System Engineering
- ▶ Applied Mathematics and Statistics
- ▶ Earth and Planetary Sciences, Environment



FACULTY OF LAW, ECONOMICS, AND MANAGEMENT



[Click here for more information on the Faculty of Law, Economics and Management](#)



BACHELOR DEGREES

- ▶ Law
- ▶ Economics and Management*
- ▶ Professional degrees in Human Resources; Insurance, Banking, Finance; Management of Agricultural and Agrifood Organisations

** In the third year, four fully differentiated courses are offered: Applied Economics; Economics and Management of Organizations; Sales and Marketing; Financial Accounting*

MASTERS

- ▶ Public and Private Law
- ▶ Accounting, Control and Audit
- ▶ Management Control and Organisational Audit: Information Systems
- ▶ Sales and Marketing
- ▶ Human Resources management
- ▶ Money, Banking, Finance and Insurance:
 - Marketing of Financial and Insurance Products
 - Asset Management consultant in Agency



VANNES INSTITUTE OF TECHNOLOGY



[For more information on the Vannes Institute of Technology click here](#)



TECHNICAL UNIVERSITY BACHELOR DEGREES (BACHELOR UNIVERSITAIRE DE TECHNOLOGIE /BUT) IN FOUR DOMAINS

- ▶ Computer Science
- ▶ Statistics and Business Intelligence
- ▶ Business and Administration Management
- ▶ Sales and Marketing Techniques



LORIENT AND PONTIVY INSTITUTE OF TECHNOLOGY



[For more information on the Lorient and Pontivy Institute of Technology click here](#)



TECHNICAL UNIVERSITY BACHELOR DEGREES (BACHELOR UNIVERSITAIRE DE TECHNOLOGIE /BUT) IN FIVE DOMAINS

- ▶ Risk Management, Health and Safety at work
- ▶ Thermal Engineering and Energy
- ▶ Industrial Engineering and Maintenance
- ▶ Logistics and Quality Control Management
- ▶ Chemical Engineering - Process Engineering (Pontivy)



SCHOOL OF ENGINEERING



[Click here for more information on the Ensibs School of Engineering](#)



- ▶ Mechatronics
- ▶ Cyber defence
- ▶ Software Cybersecurity
- ▶ Industrial Engineering 4.0
- ▶ Civil Engineering 4.0

1.3 UBS COURSE CATALOGUE

Clicking on [this link](#) will take you to the University multi-criteria course catalogue and the description of the various courses offered by the institution. This will give you an overview of UBS in terms of its courses and/or research.

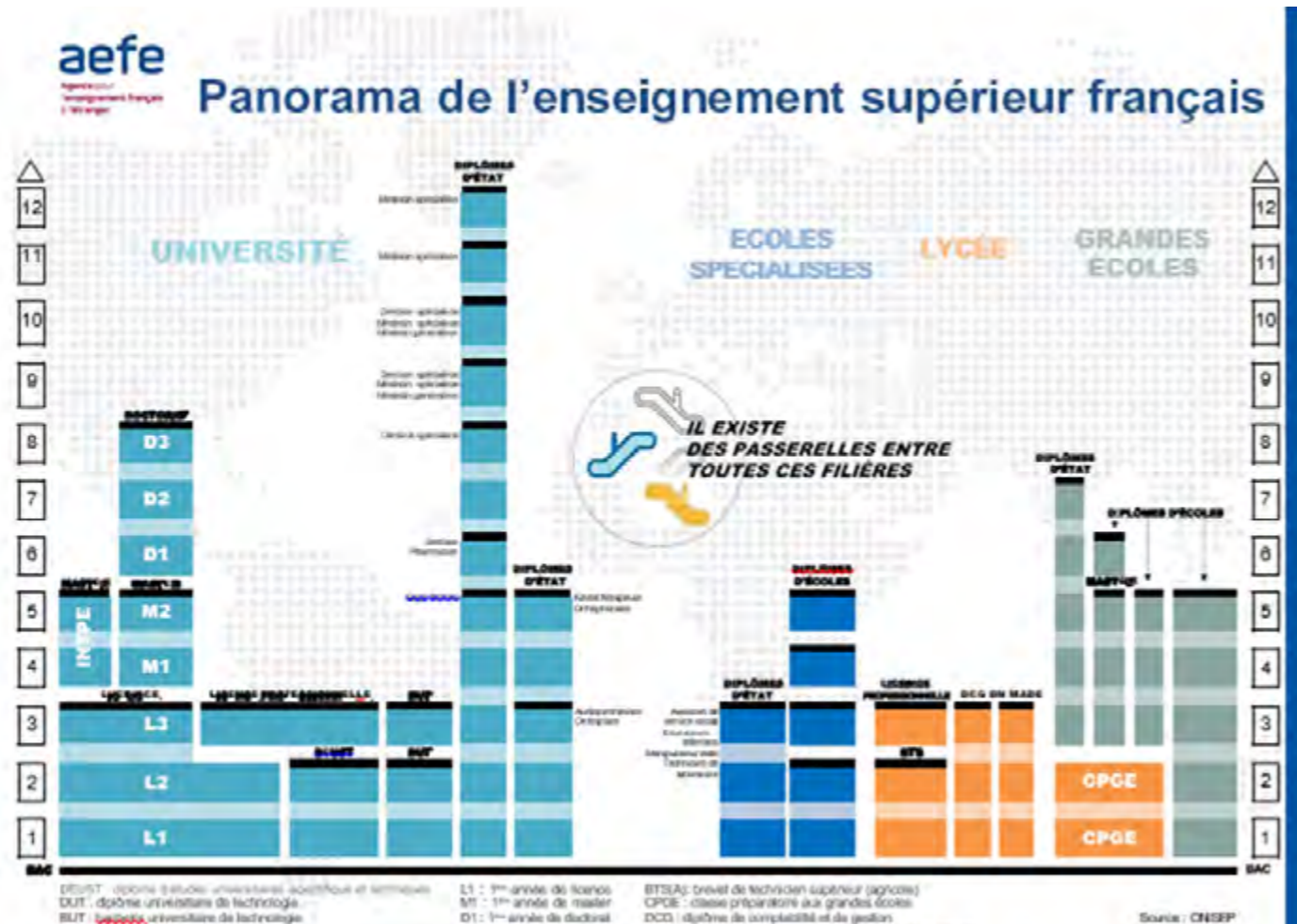
If you wish to check the courses directly offered by each Faculty or Institute, click on any of the logos below and look for the pop down menu "Formation":



Details of the Syllabus are available for each degree and can usually be found on the bottom right of the screen as a downloadable pdf file under "plaquettes" or "pedagogical booklet" - in French "livret pédagogique".



THE FRENCH HIGHER EDUCATION SYSTEM



1.4 ORGANIZATION OF STUDIES


A year at the university consists of 2 semesters:
 ► First semester from September to December/January,
 ► Second semester from January to May/June depending on the course.
 Each semester, you should get 30 ECTS Credits therefore, 60 ECTS Credits per year.

There are two types of exams that you will need to pass in order to obtain your degree:
 ► **Continuous Assessment** (Contrôle continu) all throughout the semester: written exams, oral presentations, class attendance and participation also count for the continuous assessment
 ► **Final Assessment** (Contrôle terminal or Partiel) at the end of each semester (December-January and May-June)

In the event of failing exams, for Bachelor's and Master's level courses, there is a "second session" ("deuxième session"), or "session de rattrapage", which allows students to retake written and/or oral tests at the end of the year.

VOCABULARY

- **Cours magistraux** are lectures taking place in lecture theaters.
- **Travaux dirigés** are tutorials with a small group of students. It is an opportunity to ask questions, share ideas with fellow students and do study exercises.
- **Travaux pratiques** are classes in laboratories.



CHAPTER 2
**UBS SUPPORT
SERVICES**



2.1 THE INTERNATIONAL OFFICE

LE SERVICE DES AFFAIRES INTERNATIONALES

The International Office (in French Service des Affaires Internationales - SAI) is a service that is common to the Faculties, Institutes of Technology and the School of Engineering.

It implements the international policy of the University:

- ▶ It informs and supports students and staff, in their international projects within the framework of partnerships.
- ▶ It manages and coordinates international mobility programs (studies and internships abroad).
- ▶ It is in charge of the international promotion of the University, such as negotiating bilateral agreements for the internationalization of programs.
- ▶ It welcomes and supports international students before and upon their arrival at UBS.
- ▶ It welcomes international partner delegations.

LORIENT
Le Paquebot Building
4, rue Jean Zay
Phone number: +33 (0)2.97.87.66.70
Monday to Friday
9 am to 12 pm and 1:30 to 5 pm

VANNES
Campus TOHANNIC
Yves Coppens Building
Office B022
Phone number: +33 (0)2.97.01.70.24
Monday to Friday
8 am to 12:30 pm and 1:30 to 5 pm
On Wednesdays: 9 am to 12:30 pm
and 1:15 to 5:15 pm



THE WELCOME DESK

One key priority for UBS is the quality of its welcome for international students. For this purpose, UBS focuses on hosting students via international bilateral agreements and recruiting through Campus France networks. In order to ensure smooth student integration in the cities of Lorient, Vannes and Pontivy and on the University campus, with regards to both practical and social aspects, UBS has put in place a welcome process for international students admitted at UBS. It targets both exchange and individual students.

It includes:

- ▶ Two weeks of administrative orientation upon arrival
- ▶ An intensive refresher course in French and French courses from level B1 + / B2 to level C1 offered throughout the year
- ▶ One-stop Welcome Desk with presentations from all university support services such as:
 - The sectors of accommodation, catering, and the allocation and management of higher education grants, and also social and cultural action (CROUS)
 - Family Allowance Fund (CAF)
 - Primary Health Insurance Fund (CPAM)
 - Organizations in charge of student health insurance (mutuelles)
 - Student associations

Contact details:

LORIENT HEAD-OFFICE
Sandra VESSIER
Head of the International Office:
Phone number: +33 (0)2.97.87.66.70
sai.candidats-internationaux@listes.univ-ubs.fr

LORIENT SECRETARIAT
Laure GUYADER
Phone number: +33 (0)2.97.87.66.70
Maurin LAGASSAT
Phone number:
+33 (0)2.97.87.66.72

VANNES SECRETARIAT
Glykéria KARAKOULAKI
Phone number: +33 (0)2.97.01.70.24
Myriam PICHON
Phone number: +33 (0)2.97.48.50.62

For general enquiries, please contact:
sai@univ-ubs.fr

If you are coming to UBS as an exchange student, please contact:
sai.incoming-exchange@listes.univ-ubs.fr

If you are coming to UBS to obtain a UBS degree, please contact:
sai.candidats-internationaux@listes.univ-ubs.fr



2.2 STUDENT HEALTH AND DISABILITY PREVENTION CENTRE

LE PÔLE ÉTUDIANT PRÉVENTION SANTÉ & HANDICAP

Medical consultations, Counselling, Social Assistance, Support and planning of your studies ... the Student Health and Disability Prevention Centre receives, advises, informs and guides students according to their respective needs.

LORIENT CAMPUS
Maryse Samedy - 02 97 87 45 99
sante.handicap.lorient@listes.univ-ubs.fr

VANNES CAMPUS
Angélique Sariégo - 02 97 01 27 21
sante.handicap.vannes@listes.univ-ubs.fr



MEDICAL VISITS AT UBS

During your studies you must undertake at least one compulsory medical visit as part of the University preventative health and check-up campaign. You can also ask for an appointment with the University doctor to:

- ▶ obtain a medical certificate recommending the organization and planning of the exams you need (with regards to the disability situation)
- ▶ obtain a medical certificate allowing you to practice sports (high level competitions excluded) based on your answers to the sports service (SUAPS) questionnaire
- ▶ have a consultation for any information in the field of prevention and health (addictions, nutrition, sleep, smoking, sexuality, mental health issues, anxieties, depression, ...)

You can book appointments online via the Intranet ENT (except for academic exam arrangements).

For special academic arrangements, contact the secretariat:

LORIENT CAMPUS
Docteur Musset ou Docteur Allard - 02 97 87 45 99
sante.handicap.lorient@listes.univ-ubs.fr

VANNES CAMPUS
Docteur Allard - 02 97 01 27 21
sante.handicap.vannes@listes.univ-ubs.fr

COUNSELLING WITH A PSYCHOLOGIST

If you are going through a difficult time, feeling stressed or down, experiencing personal, family issues linked to or separate to your studies ... You can always consult a psychologist (prior appointment required) for occasional or on-going psychological support.

The appointments are individual and confidential.

LORIENT CAMPUS
Julie Bazire - 02 97 87 45 99
sante.handicap.lorient@listes.univ-ubs.fr
VANNES CAMPUS
Isabelle Le Hir-Le Bouquin - 02 97 01 27 21
sante.handicap.vannes@listes.univ-ubs.fr

APPOINTMENTS WITH A STUDENT SOCIAL WELFARE OFFICER

The Student Social Welfare Office welcomes and listens to students experiencing problems regardless of what the problem is, whether linked to family issues, financial or administrative. Welfare officers are bound by professional secrecy, and ensure a daily presence on both the Vannes and Lorient campuses. Welfare officers provide students with advice and information regarding different forms of support and assistance. They advise students seeking financial assistance, guidance or information. Officers, together with the students, strive to find the best solutions to the students' personal, family or study related problems.

The specific one-off assistance "Aide Spécifique d'Allocation Ponctuelle" (ASAP) enables certain students, after a meeting with a welfare officer, to benefit from a one-off or annual financial aid.

The University also has a special social emergency fund for students confronted with extreme financial difficulties. In January 2020, The French Ministry of Higher Education, Research and Innovation put in place a Hotline number 0 806 000 278, Monday to Friday from 9 to 5 pm.

This hotline redirects you directly to your university Student Welfare Office. We therefore advise you to directly contact the university student social welfare officers on the following numbers:

LORIENT CAMPUS
Dominique Island et Morgane Le Vaillant
02 97 87 45 99
sante.handicap.lorient@listes.univ-ubs.fr

VANNES CAMPUS
Annaïg David et Morgane Le Vaillant
02 97 01 27 21
sante.handicap.vannes@listes.univ-ubs.fr



Students enrolled at UBS

Formulate your request as early as possible before **November 15th for the first semester and before March 1st for the 2nd Semester by making an appointment with:**

LORIENT CAMPUS
Hélène Courtet - 02 97 87 45 99
sante.handicap.lorient@listes.univ-ubs.fr

VANNES CAMPUS
Fabien Coleu - 02 97 01 27 21
sante.handicap.vannes@listes.univ-ubs.fr

Future UBS students

Anticipate your arrival at UBS and do not hesitate to contact us before joining UBS, we will let you know which procedures to undertake and assess your needs together.

AGAINST SEXUAL AND SEXIST VIOLENCE

«The social environment within Higher education and Research is unfortunately not exempt from sexual violence and sexism. The latter contravene student and staff individual dignity and respect within our institutions. They are an impediment to the full expression of skills and talents which are the very missions of the Higher Education and Research public service.»

Frédérique Vidal,
Minister for Higher Education, Research and Innovation
(March 19, 2018)

To learn about the actions undertaken by UBS to fight such acts, please visit our website.



Your well-being is of paramount importance to UBS!

DISABILITY OR DISABLING HEALTH PROBLEMS

Recurrent difficulties or limitations, whether physical, sensorial or psychological can impede studying and life on the Campus. The Student Disability Support Office (in French Le Service d'Accompagnement des Étudiants en Situation de Handicap-SAESH) advises, evaluates and coordinates the setting up of study and exam arrangements necessary for a successful academic year. Success is also participating in campus events. The person in charge of welcoming and supporting students with disabilities ensures the implementation of arrangements such as:

- ▶ Material support such as adapted office furniture, loan of computers, electronic parking tags, digital books...
- ▶ Human support such as a personal note-taker, exam secretary, methodological support, sign language interpreter
- ▶ Study arrangements for special needs: Timetable adjustments, waving of compulsory attendance, extra time to study the curriculum, adapted learning and accessibility support (Sound or voice over, Braille tactile writing, font size, Format)
- ▶ Exam arrangements: on the written advice of the University's Doctor, you can benefit from extra time during a test, or authorisation to leave the room during an exam...

2.3 STUDIES AND CAREER COUNSELLING SERVICES

LE SERVICE UNIVERSITAIRE D'INFORMATION D'ORIENTATION

ET D'INSERTION PROFESSIONNELLE

To help you choose your courses and succeed in your studies at UBS please contact the career counselling services and meet with the officers who will provide you with all available resources (documents, brochures, online websites, or career counsellor's names).

For more information, please visit the [SUIO-IP website](#) (in French).

LORIENT
Paquebot Building
CS7030
56321 Lorient cedex
+33 (0)2.97.87.66.60
suiqip@univ-ubs.fr

VANNES
Teaching and Research
Centre Yves Coppens
rue André Lwoff - CS605
56017 Vannes cedex
+33 (0)2.97.01.27.00
suiqip@univ-ubs.fr



2.4 SPORTS ACTIVITIES ON OFFER AT UBS

LE SERVICE UNIVERSITAIRE DES ACTIVITÉS PHYSIQUES ET SPORTIVES



The UBS Sports service offers more than 40 activities to its students. Given its proximity to the sea, our University allows students to practice, besides traditional sports, numerous activities involving contact with the water: rowing, catamaran sailing, surfing, windsurfing, stand up paddle, kayak, diving along the coast: the Gulf of Morbihan, the Quiberon Peninsula, Lorient, Port-Louis, Guidel, the Rhuys Peninsula, etc.

For more information, please visit the [SUAPS website](#). Registrations are made online.



2.5 UBS LANGUAGE CENTRE

LE CENTRE DE LANGUES DE L'UNIVERSITÉ BRETAGNE SUD

The Language Centre, in French "Centre de Langues de l'Université Bretagne Sud" (CLUBS) provides support to students, staff, job seekers and anyone willing to learn a language or improve their language skills. Available on both campuses of Lorient and Vannes, UBS offers a complete range of French as a Foreign Language (FLE) courses with the aim of discovering and deepening knowledge of the French language and culture.



For more information, please visit the [CLUBS website](#).



Université
Bretagne Sud

UBS

CHAPTER 3

STUDENT LIFE



3.1 INFORMATION TECHNOLOGY AT UBS

UBS is constantly updating its Information Technology Services to provide students with the best and most up-to-date Information Technologies and Services.

When students join UBS, they can benefit from:

- ▶ free Wi-Fi access everywhere on campus on their phones, iPad tablets, and computers
- ▶ remote access from their home to UBS online resources, provided they have private internet access in their accommodation
- ▶ a free email address and private login details for all communication with administrative staff and teachers
- ▶ free download of the MS Office Pack
- ▶ access to a personalised and individualised student space with information on lectures and tutorial timetables, grades, documents or administrative forms
- ▶ access to the Intranet for booking study rooms, books, and documents from the Library
- ▶ personal storage space of documents etc., on the UBS server
- ▶ free access to Large File Transfer Systems
- ▶ access to online courses via the interactive Moodle academic platform (depending on the course), access to course material, and to individual assignments or group assignments and an online calendar to check when these assignments are due



- ▶ online access to the Opening Activities Modules (Activités d'Ouverture - AO)
- ▶ remote access to live webinars of certain public events, conferences, or guest lectures



- ▶ a rechargeable student card with an ID picture and the Izly mobile phone App to make quick payments at the student canteen, vending machines, university restaurants and for printing or photocopying services. This student card is very important as it also gives the student access to discounts on public transport and for various cultural activities (museums, exhibitions etc)
- ▶ free access to UBS computer stations (PCs) and to state-of-the art videoconferences and modern teaching facilities
- ▶ access to a wide choice of national and international internships through the online Job Teaser platform
- ▶ online registration systems for access to sport and cultural activities each semester
- ▶ free access to a MyCommunity extension of the LEEVE application, which allows the practice of foreign languages and multicultural meetings
- ▶ state of the art antivirus protection and data privacy measures
- ▶ free IT help from the UBS IT service

So, make sure when you arrive, that you check out all the IT services that are available to you as a student.

NB : Students must respect the UBS information technology charter and anti-plagiarism rules. In the event of non-compliance with these guidelines, the access rights of the students could be withdrawn.



3.2 UNIVERSITY LIBRARY - LA BIBLIOTHÈQUE UNIVERSITAIRE

The University of South Brittany gives its students access to a University Library available on both the Lorient and Vannes campuses. The Library provides not only welcoming and varied workspaces but of course as well a rich and multidisciplinary documentation, in printed versions or online. The librarians offer services and personalized assistance, online and on site, to help you out in your academic work and improve your life on the campus.

The whole online catalogue is available [here](#):

FREE LIBRARY ACCESS LOCALLY

UBS students have free access to the interconnected public libraries network in various towns in the Morbihan, and vice versa - local citizens from Pont-Scorff, Quéven, Lorient, Vannes, Lanester and Ploemeur can also access the University Collection.





3.3 MUSIC, ARTS AND CULTURE

At UBS, students have access to a range of cultural, musical and artistic activities each semester. These activities are all free and open to all students of the University of South Brittany, by registration due to the limited places available.

The range of activities each semester includes:

Radio broadcasting: learning to carry out interviews and to prepare scientific broadcasts

Audio visuals: learning how to do journalistic video shoots and video editing techniques

- ▶ Engraving
- ▶ Photography
- ▶ Etching
- ▶ Drama
- ▶ Music
- ▶ Choir
- ▶ Playing in a band

To download this semester's program (in French) [click here](#).



PASS CULTURE

This « *Culture Pass* » is an initiative of the French Ministry of Culture. This pass enables students, the year they turn 18, to have access to an App on which they have 500 euros lasting 24 months, to discover and book local cultural events and digital services. This includes books, concert tickets, theatre tickets, museums, music lessons and digital subscriptions.



3.4 THE STUDENT HOUSE - LA MAISON DES ÉTUDIANTS

What is *La Maison des Étudiants*?

La MDE or Student House is the one-stop shop for all your questions related to student life. Located on both the Vannes and Lorient campuses, *La Maison des Étudiants* is here to help you to:

- ▶ obtain answers to practical everyday life questions
- ▶ be informed about and take part in campus activities
- ▶ have fun and meet students from all walks of life
- ▶ join student associations or clubs
- ▶ be informed about the cultural outings and events nearby the campus

Services available to all students:

- ▶ job services: Student friendly job offers
- ▶ student project support system: Networking, project management, logistical back-up
- ▶ incubator for young associations: support for the creation, management and monitoring of student associations, associative head office on request. Help with setting up projects and applying for grants
- ▶ meeting spaces for work, entertainment or getting together
- ▶ a cyber space with Internet access
- ▶ an office for student representatives and student associations
- ▶ artistic workshops

The student houses are managed in partnership with UBS and CROUS

LORIENT

(Opposite the Campus Lettres Bus Stop)
12 rue de Lanveur - 56100 Lorient
Phone number: +33 (0)2 97 83 37 93
mde.lorient@crous-rennes.fr

VANNES

Campus de Tohannic - 9 Rue André Lwoff - 56000 Vannes
Phone number: +33 (0)2 97 01 03 89
mde.vannes@crous-rennes.fr

The Association of Students in International Mobility (AEMI) is located on the Vannes campus. You can email or call them or contact them via Facebook. Here are the contact details:

aemi.ubs@gmail.com
www.facebook.com/AEMIUBS/
Tel : 06 05 65 21 32

Members of this association can assist you in looking for an accommodation in Vannes. Come and meet them during the Welcome Deiz at the start of the academic year.

POINT D'ACCÈS AU DROIT



PERMANENCE JURIDIQUE
GRATUITE, CONFIDENTIELLE,
SANS RENDEZ-VOUS.



3.5 POINT OF ACCESS TO YOUR LEGAL RIGHTS - LE POINT D'ACCÈS AU DROIT

The University « Point of access to your Legal Rights » responds to students' legal questions regarding private law matters such as civic rights, social rights, work law, family law, accommodation, consumer legislation or foreigners' rights. The PAD does not deal with matters related to examinations, discipline, or administrative litigation issues with UBS. You can contact the University PAD to set up a remote telephone meeting on the working days.

Send an email to the following address padetudiant@gmail.com and do not forget to provide your phone number to make an appointment.



3.6 YOUTH INFORMATION OFFICES - LES BUREAUX INFORMATION JEUNESSE

Attached to the region in administrative terms these offices are resource centres for all young people regarding important issues such as health, accommodation, initiatives, leisure, holidays, careers and jobs, international...

Do not hesitate to pick up brochures such as their student guide or their leisure guide for each town.

BIJ LORIENT
Esplanade du Moustoir - Rue Sarah Bernhardt
56100 LORIENT
Phone number: +33(0)2.97.84.84.57
www.infojeuneslorient.org

Services on offer
- Internet access
- Help with putting together a CV
- Accommodation
- A board to post any adds

BIJ PONTIVY

13 bis, rue Saint-Jory - BP 225
56305 PONTIVY CEDEX
Phone number: +33(0)2.97.25.38.35
pji.pontivy@wanadoo.fr

BIJ VANNES
22, avenue Victor Hugo - BP 509
56019 VANNES CEDEX
Phone number: +33(0)2.97.01.61.00
bij@mairievannes.fr
www.bij-vannes.fr

Services on offer
- Internet access
- Help with putting together a CV
- Baby-sitting
- Exhibition Hall
- Accommodation
- Projjeunes Project



CHAPTER 4

**PREPARING
FOR YOUR
ARRIVAL AT UBS**



4.1 ADMISSION PROCEDURES

Most of the courses offered by the University of South Brittany are open to international students provided they have a good academic standing (cumulative numerical average of all grades must be of min. 13/20 for the entire secondary or university record) and have a sufficient level of French (the French proficiency certificate is mandatory for all the candidates coming from countries where French is not the official language exclusively. Level B2 is required for Science & Engineering Science Faculty and Level C1 is required for Arts, Humanities and Law, Economics Faculties).

Entrance examinations:

There are NO entrance examinations for Bachelor Degree (Licence), Master, and Doctorate levels. Admission is based on your academic records and appraisal of all your application documents, but there is an entrance exam to enter the ENSIBS School of Engineering (refer to ENSIBS website for details).



If you are applying as part of a Bilateral Agreement between your University and UBS

You must first contact the International Office of your University to obtain a mobility agreement.

Once you are nominated by your home University you must send your application to the UBS International Office



4.1.2 INDIVIDUAL STUDENTS

Individual students are personally responsible for their entire application process and for the strict observance of procedures and deadlines.

Procedures may vary depending on their country of residence, their citizenship and the required course pre-requisites.

YOU LIVE ABROAD AND YOU DO NOT HAVE THE CITIZENSHIP OF A EUROPEAN COUNTRY

You live in one of the 46 countries listed below...

AFRICA: Benin, Burkina Faso, Burundi, Cameroon, Comoros, the Republic of the Congo, Ivory Coast, Djibouti, Gabon, Guinea, Madagascar, Mali, Mauritius, Mauritania, Niger, Nigeria, Democratic Republic of Congo, Senegal, Chad, Togo.

ASIA: China, South Korea, India, Indonesia, Japan, Singapore, Taiwan, Vietnam.

AMERICA: Argentina, Brasil, Chile, Colombia, Haiti, United States, Mexico, Peru.

NORTH AFRICA / MIDDLE EAST: Algeria, Saudi Arabia, Egypt, Iran, Kuwait, Lebanon, Morocco, Tunisia.

EUROPE: Russia, Turkey.



... and you wish to apply for the first year of a Bachelor Degree: you must use the "Studying in France" (in French "Études en France") procedure

«Studying in France» procedure | Campus France



► You wish to apply for an Institute of Technology: Use the Parcoursup platform



...and you wish to apply for a Bachelor Degree Year 2, Bachelor Degree Year 3, Master Year 1, Master Year 2 or for ENSIBS: you must follow the "Studying in France" (in French "Études en France") procedure

«Studying in France» procedure | Campus France

You wish to apply for admission into the second year of a Bachelor Degree to the second year of a Master or ENSIBS

► If you are already enrolled in a French Higher Education Institution (HEI): Apply online with E-candidature



► If you are not already enrolled in a French Higher Education Institution (HEI).



You do not live in one of the 46 countries listed above...

...and you wish to apply for the first year of a Bachelor Degree: you must fill the white DAP form (in French *Demande d'Admission Préalable blanc*) between November and January

Click here to access and download the white DAP form



...and you wish to apply for a Bachelor Degree Year 2, Bachelor Degree Year 3, Master Year 1, Master Year 2 or for ENSIBS: you must fill in the UBS application form (pdf file)



YOU HAVE CITIZENSHIP OF A EUROPEAN COUNTRY

European Union candidates **follow the same processes as French students in order to register to a French Higher Education Institution (HEI).**

You are considered an EU candidate if you hold citizenship from:

- one of the 27 countries of the EU
- a country included in the EEA (EU + Norway, Iceland, Liechtenstein)
- Switzerland, Monaco, or Andorra

You wish to apply for the first year of a Bachelor Degree:

Please use the "Parcoursup" platform

The Parcoursup application process is mandatory to apply for most of the training offered by French Higher Education Institutions (HEI).



YOU LIVE IN FRANCE AND YOU DO NOT HAVE CITIZENSHIP OF A EUROPEAN COUNTRY

You wish to apply for the first year of a Bachelor Degree

► You wish to apply for one of 3 Faculties at UBS: Fill in the green DAP form (in French *Demande d'Admission Préalable vert*). Click here to access and download the Green DAP form



You wish to apply for the admission into the second year of a Bachelor Degree to the second year of a Master and ENSIBS:

Please use the e-candidate procedure





Required language level and recognition of international diplomas in France

Level C1 in French is required for programmes taught in Arts and Humanities, Social Sciences, Law, Economics & Management. Level B2 is sufficient for other courses. Refer to the [Common European Framework of Reference for Languages \(CEFR\)](#).

International students who **do not meet the above requirements** can follow intensive preparatory language courses at UBS if required. [Click here to find details of starting dates and costs of all Intensive and Semi-Intensive French language courses available at UBS](#)






Candidates living in France and who are not already enrolled in a French Higher Education Institution will have to provide a certificate of recognition of their study abroad. You can make a request to France Education International www.france-educationinternationale.fr/enic-naric-page/reconnaissance-diplome-etranger-documents-delivres



4.2 IMMIGRATION PROCEDURES

Visa applications depend on you having been formally accepted by a higher education institution in France, the duration of your training and your nationality. You will be also asked to provide evidence of having sufficient financial resources to support yourself during your stay, usually around 615 euros minimum per month for the total length of your studies.

Types of visas or residency cards depend on the duration of your training:

LENGTH OF TRAINING COURSE	TYPE OF VISA OR RESIDENCY CARD	FORMALITIES IN FRANCE
Not exceeding 3 months	<i>short-stay visa</i> 	NO
Between 3 and 6 months	<i>Temporary long-stay visa</i> 	NO
Between 4 months and 12 months	<i>Long-stay visa</i> , valid as a residence permit ("Visa Long Séjour valant Titre de Séjour -étudiant" also known as the VLS-TS étudiant), valid from 4 to 12 months 	YES within 3 months of your arrival Online validation procedure + online payment of the tax of 75 euros (2020) https://administration-etrangers-enfrance.interieur.gouv.fr/particuliers/#/
If you need to continue your studies after 12 months for another 12 months	Apply for a Temporary Residency card - ("Carte de séjour temporaire étudiant") valid for 12 months only https://www.servicepublic.fr/particuliers/vosdroits/F2231	YES, apply online 2 months minimum before your VLS TS expires and book an appointment at the Morbihan prefecture. Once you get your Carte de séjour temporaire – étudiant, it is valid for one year without further procedure. For more information, please visit the website https://cutt.ly/dhYY14a
If you need to continue your studies after 12 months, for more than another 12 months	Apply for a « carte de séjour pluri-annuelle - entrées multiples » Valid for multiple years until the end of your studies https://www.servicepublic.fr/particuliers/vosdroits/F2231	YES, apply online and book an appointment at the Morbihan prefecture. For more details, please visit: https://cutt.ly/dhYY14a

It is always recommended to submit your visa application or your temporary residency card application between 2 to 3 months before your arrival in France or before your current visa expires. Visa applications cannot be submitted more than 3 months prior to the beginning of your trip for a long stay.



CITIZENSHIP AND VISA APPLICATION

- ▶ Students who hold European citizenship or are from the European Economic Area (Iceland, Liechtenstein and Norway), or Swiss students with Swiss citizenship do not need a student visa.
- ▶ Non-European students from an “Etudes en France” country listed above must follow the directions of the Campus France Office from their home country.
- ▶ Non-European students, NOT from an “Etudes en France” country and who wish to study for more than 3 months must first apply online for a Long-Stay Visa (Visa VLS-TS) and then ask for an appointment at the French consular authorities in their home country.



The visa application must be carried out on france-visas.gouv.fr the official visa website for France.

STEP 1

Use this official French Government [visa wizard](#) to check if you need a visa and what documents you will have to provide.



STEP 2

Create an account and complete your online application form here: https://france-visas.gouv.fr/en_US/web/france-visas/.

To simplify long-stay study visa applications for international students, France-Visas now provide students with the possibility of sending digital copies of their supporting

documents when completing their visa application online. This feature is at first accessible to applicants for long-stay student visas residing in a country where the visa application is outsourced to an ESP and available online.

List of documents to upload on France-Visas

- passport
- 2 recent ID pictures in OACI format (pdf)
- valid residence permit from where you live
- original copy of the last diploma you obtained
- letter of acceptance from UBS
- proof of accommodation for the first three months
- grant certificate or other proof of funding (eg: Bank Statement) attesting that you have at least 615 euros per month for the total duration of your studies in France

STEP 3

Book an appointment on France-Visas with the visa section of the French embassy or consulate in your home country or with the external service provider.

Submit in person original copies of these documents:

- your valid passport, a photocopy of the identity page and a photocopy of the visa pages
- online application form signed and dated and receipt of application
- original supporting documents (no need to bring photocopies if you already uploaded them on France-Visas)

STEP 4

Track your application. You will be notified by email when your visa is ready.

Visa Pricing for VLS-TS (2020 fees):

Countries with EEF procedure: 50 € *
Other countries: 99 € *

* This amount is indicative; some special cases may give rise to different rates.

**YOU CAN ALSO CONSULT THE
CAMPUS FRANCE TUTORIAL:
ONLINE VISA APPLICATION**



VLS-TS «étudiant» visa entitles the holder to:

- travel freely in all of the countries of the Schengen Area
- work 964 hours per year, i.e. 20 hours per week, to supplement their financial resources
- benefit from VISALE, the free rental deposit service for students
- receive a rental subsidy from CAF, the Family Allowance Fund (Caisse d'Allocations Familiales)
- extend their stay beyond the period of validity of the issued residence permit

The VLS-TS visa must be validated once in France.
See Chapter 6: Administrative Steps upon your Arrival.
Please note it is not possible to amend your visa once in France.

THE IMMIGRATION INFORMATION ABOVE HAS BEEN SOURCED FROM THE FOLLOWING WEBSITES

Official website for visas in France

https://france-visas.gouv.fr/en_US/web/france-visas/student

Official website of the French government

<https://www.service-public.fr/particuliers/vosdroits/N19804>

Documents - citizenship

<https://www.service-public.fr/particuliers/vosdroits/N19810>

Directorate General for Foreign Nationals in France

<https://administration-etrangers-en-france.interieur.gouv.fr/particuliers/#/vls-ts/demarches/etape/numero-visa>

Campus France website

<https://www.campusfrance.org/en/student-long-stay-visa>
<https://www.campusfrance.org/fr/visa-etudiant-pour-la-france-connectez-vous-a-france-visas>

Préfecture du Morbihan à Vannes

24, place de la République
56000 Vannes
Phone number: 02 97 54 84 00

Sous-préfecture du Morbihan à Lorient

Quai De Rohan
56100 Lorient
Phone number: 02 97 84 40 00

Sous-préfecture du Morbihan à Pontivy

Rue François Mitterrand
56300 Pontivy
Phone number: 02 97 25 00 08



ADMINISTRATIVE DOCUMENTS TO BRING WITH YOU:

NON-EUROPEAN STUDENTS

- a passport valid for the duration of your stay
- original copies of your degrees and certified translations in French of your degrees
- full academic transcript containing all your grades obtained for the last two years
- long-stay visa for France when staying for more than 3 months
- the letter of acceptance from the University of South Brittany (prior admission or pre-registration certificate)
- proof of financial resources
- civil liability insurance certificate
- vaccination or health booklet with your medical history
- wedding certificate (if applicable)
- ID photos
- means to pay your university registration fees (cash, credit card, etc.)

ERASMUS STUDENTS FROM EU COUNTRIES

- valid Passport or valid National Identity Card from your home country
- an Erasmus+ mobility statement from your university
- your university student card
- your European health insurance card or private insurance health card
- proof of your mobility scholarship

4.3 HOW TO FINANCE YOUR STUDIES AT UBS?

Before coming to UBS, it is advisable to establish a budget and have sufficient means to support yourself once in France.

Financial support can be provided by:

- personal means
- a scholarship/grant
- a bank loan

To live comfortably while in France, students will need between 695 and 795 euros per month. This amount covers accommodation, food, transport, health, etc. It can be reduced depending on the financial support students may get.

Approximate expenses per month (2020 figures)

Housing	350/400€
Food	200/250€
Public Transport	30€
Mobile phone plan	20€
Other expenses (outings, clothes, culture, stationary, personal care)	95€
TOTAL	695/795€

Additional costs

Students should also consider that, when they arrive, they, **like all tenants in France**, will have to pay up-front rental deposits for up to two months if they are seeking private accommodation.

In addition, **apart from incoming Erasmus+ and exchange students**, all students registered at UBS (including French nationals) must pay a compulsory student contribution fee of approximately 92 euros per academic year for student life.

4.4 SCHOLARSHIPS FOR INTERNATIONAL STUDENTS

Three types of scholarships exist for international students

- French government scholarships: these scholarships are awarded only by the cultural and cooperation services of French embassies abroad, consult the website <https://www.diplomatie.gouv.fr/en/coming-to-france/studying-in-france/>
- scholarships awarded by the government of the student's home country for study abroad; for more information, please contact the scholarship body in your home country
- international scholarships granted by non-governmental organisations (NGOs) or international institutions.

The site [Campus Bourses](#) is a comprehensive directory of scholarship programmes for internationally mobile students. Beware: the application process is long and the application deadlines are very strict!



**UBS DOES NOT OFFER
SCHOLARSHIPS
TO INTERNATIONAL STUDENTS**

4.5 BOOKING TEMPORARY ACCOMMODATION

Booking permanent accommodation from abroad can be tricky given the distance and the numerous offers that you find online.

It is advisable to book temporary accommodation for when you first arrive in France. This gives you a chance to view various types of accommodation in the private sector prior to renting it.

Hereafter, you will find a list of temporary accommodation available on the 3 campuses:

Types of temporary accommodation that are affordable

- Lorient: Youth hostel
- Vannes: Espace Montcalm
- Pontivy: Youth hostel

The bookings can be made via the websites of these institutions.

LORIENT	PONTIVY	VANNES
<p>Youth hostel 41, rue Victor Schoelcher 56100 LORIENT Phone number: +33 (0)2.97.37.11.65 https://www.hifrance.org/aubergede-jeunesse/lorient.html Price per night: 22€ (breakfast included) + membership Open all year long / check-in from 5pm to 8:30pm.</p>	<p>Youth hostel Ile des Récollets 56300 PONTIVY Phone number: +33 (0)2.97.25.58.27 https://www.hifrance.org/aubergede-jeunesse/pontivy.html</p>	<p>Espace Montcalm 55 rue Monseigneur Tréhiou 56007 VANNES Phone number: +33 (0)2.97.68.15.68 accueil@montcalmvannes.org www.montcalm-vannes.org</p>
<p>Hostel for young workers Résidence COURBET 83 rue Amiral Courbet 56100 LORIENT Phone number: +33 (0)2.97.21.16.73 http://logement-servicesjeune.agoraservices.fr/</p>	<p>Hotel Robic 4 rue Jean Jaurès 56300 PONTIVY Phone number: +33 (0)2.97.25.11.80</p>	<p>Méné Hostel for young workers 14 avenue Victor Hugo 56000 VANNES Phone number: +33 (0)2.97.54.33.13 residencedumene@orange.fr</p>
<p>Hotel Du Square 5, Place Jules Ferry 56100 LORIENT Phone number: +33 (0)2.97.21.06.36 Price: from 42€ per night</p>	<p>La Terrasse Quai du Couvent 56300 PONTIVY Phone number: +33 (0)2.97.25.51.11</p>	<p>Madame Molé Hostel for young workers 10 place Théodore Decker 56000 VANNES Phone number: +33 (0)2.97.47.29.60 Foyer-madamemole@orange.fr</p>
<p>Hotel Leopold 11 rue Waldeck Rousseau 56100 LORIENT Phone number: +33 (0)2.97.21.23.16</p>		<p>Résidence Kérizac 2 rue Paul Signac 56000 VANNES Phone number: +33 (0)2.97.62.68.40</p>
		<p>Hotel Le Gras d'Or 88 avenue de Verdun 56000 VANNES Phone number: +33 (0)2.97.47.27.74</p>
		<p>Hotel Le Relais Nantais 38 rue Aristide Briand 56000 VANNES Phone number: +33 (0)2.97.47.15.85</p>





CHAPTER 5

COMING TO UBS



5.1 COMING BY PLANE? WHERE TO SLEEP NEAR THE AIRPORTS?

WHERE TO STAY AROUND ROISSY CHARLES
DE GAULLE INTERNATIONAL AIRPORT: (ROISSY CDG)
(NORTH OF PARIS)

PREMIERE CLASSE ROISSY

ZAC du Parc de Roissy
Allée des Vergers
95700 ROISSY en France
Indicative price: 59 €
Phone number: +33 (0)1.34.29.86.04
E-Mail : roissycdg@premiereclasse.fr
Web : www.premiereclasse.com/en/hotels/premiere-classe-roissy-aeroport-charles-de-gaulle

WHERE TO STAY AROUND ORLY AIRPORT
(SOUTH OF PARIS)

FASTHOME HOTEL

Centre commercial Grande-Vallée
Route Nationale 370
95500 GONESSE
Indicative price: 69 €
Phone number: +33(0)1.34.53.46.46
<http://fasthome-95500.iledefrance-hotel.com/fr/>

5.2 WHERE TO SLEEP IN PARIS?

YOUTH HOSTELS

FUAJ: United Federation of Youth Hostels:
Fédération Unie des Auberges de Jeunesse
<https://www.fuaj.org/fr/>
27, rue Pajol
75018 PARIS
Phone number: +33(0)1.44.89.87.27
Open: Mondays to Fridays from 10 am to 12:30 pm, and
from 13:30 pm to 17:30 pm
(Subway Metro: Marx Dormoy - La Chapelle)
Métro : Marx Dormoy- La Chapelle

FIAP JEAN MONNET

Foyer International d'Accueil
30 rue Cabanis
75014 PARIS
www.fiap.asso.fr
E-mail : fiap@fiap.asso.fr
Phone number: +33 (0)1.43.13.17.17



Main youth hostels in Paris

ADDRESS	ACCESS BY UNDERGROUND SUBWAY/ METRO LINE NUMBER	PHONE NUMBER
Le D'Artagnan, 80 rue Vitruve 75020 PARIS	Métro "Porte de Bagnolet" Line 3	+33 (0)1 40 32 34 56
Moov'Appart Hotel Clichy, 107 rue Martre 92110 CLICHY	Métro "Mairie de Clichy", Line 13	+33 (0)1 71 05 48 23
Cité des Sciences, 24 rue des sept Arpents 93310 LE PRE SAINT GERVAIS	Métro "Hoche" Line 5	+33 (0)1 48 43 24 11
Jules Ferry, 8 boulevard Jules Ferry 75011 PARIS	Métro "République" Lines 3, 5, 8, 9 & 11	+33 (0)1 43 57 55 60

Note that in some youth hostels you will be asked to purchase a membership card in addition to the price of your stay. This card is generally valid for one year.

USEFUL LINKS TO BOOK A HOTEL

www.airbnb.fr
www.parishotels.it/fr
www.hostels.com/fr/fr.pa.html
www.tripadvisor.fr

5.3 HOW TO GET TO MONTPARNASSE RAILWAY STATION FROM A PARIS AIRPORT?

FROM ROISSY CHARLES DE GAULLE AIRPORT

You have two possibilities:

- Take the Roissy-Montparnasse bus direct (line 4), ideal when you are fully loaded!
- Take the RER B line to Denfert Rochereau station, then change to the metro line No 6 direction “Charles de Gaulle étoile” until you stop at “Montparnasse - Bienvenue” station. Or catch the shuttle bus (18 €). Many offers are available, just search for “shuttle bus + name of the airport” on the internet. It takes around 60 minutes to reach Montparnasse Railway Station from Roissy Charles de Gaulle.

FROM ORLY AIRPORT

Take the OrlyVal towards (automatic metro) Denfert Rochereau. It costs about 12€.
Or catch a bus from Orly to Gare Montparnasse for 12€. It takes around 40 minutes to get to Montparnasse Railway Station from Orly Airport.

NB : Taxis are the most expensive way to travel in France, but are available in taxi ranks in front of all airports.

TAXIS

In order to travel safely, it is advisable to always take an official taxi located outside the airport.
[Check the prices here.](#)

USEFUL LINKS

- Paris Metro, Tramway and Bus maps and schedules:
www.ratp.fr/plans
- OrlyVal:
[Train RER B vers/depuis Paris - Aéroport Orly - Paris Aéroport \(parisaeroport.fr\)](#)
- Train bookings: www.oui.sncf

5.4 GETTING TO LORIENT, VANNES OR PONTIVY FROM PARIS

BY TRAIN

Vannes is two and a half hours by train from Paris (direct line with the *Train à Grande Vitesse* - TGV that is a high-speed train).

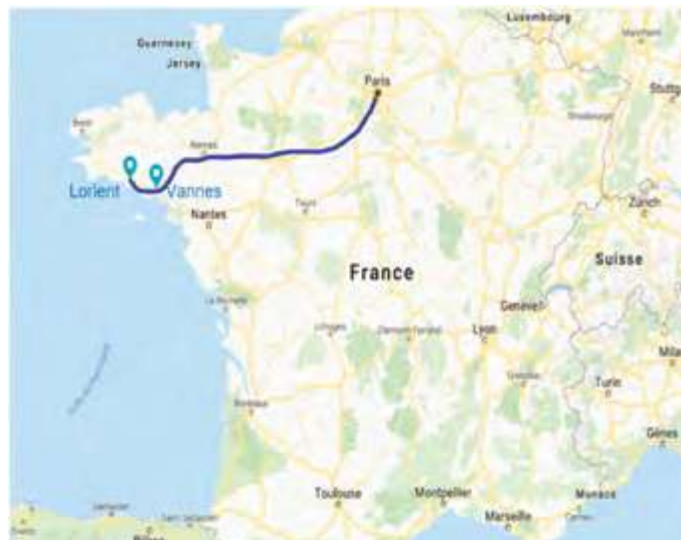
Lorient is three hours by TGV from Paris.
You cannot come to **Pontivy** by train.

La Société National des Chemins de Fer (SNCF) is the main French railway company.

To come to Brittany, you will most likely have to take the train from Montparnasse Railway Station. The “Montparnasse Bienvenue” metro station is served by lines 4, 6, 12 and 13. A metro ticket is around 1,90 euros (2020 price). It remains valid as long as you do not leave the RATP network and for 2 hours if you are travelling by metro or RER train in Paris (or for 1h30 if you take the bus or the tram).

To get to Pontivy you can catch a train up to Saint-Brieuc or Rennes and then catch a bus.

You can buy your tickets at the railway station or online:
www.oui.sncf



HOW TO CATCH A TRAIN IN FRANCE?


You can buy your ticket directly at the station at a self-service ticket machine (“borne libre-service”) or at the ticket office. Always validate your paper ticket prior to boarding a train at the yellow terminal at the entrance of the train platform.

You do not need to validate your e-ticket. However, you need to print it out beforehand or download the SNCF app and keep the e-ticket with you while traveling. Always have a name tag on all your bags. Check train numbers, departure times and train platforms on the large screens in the main hall of railway stations. Wagon numbers are on the sides of the train and seat numbers are indicated once on board.

BY BUS

There are two main low-cost bus companies operating between larger towns in France:
[Flixbus](#) and [BlaBlaCar Bus](#)

In 2020, a ticket from Paris Charles de Gaulle Airport to Vannes or Lorient by bus cost around 20 € and it takes around nine hours with one bus change at the Paris Bercy Station.

A photograph of a person's hand holding a pen and writing in a notebook. The image is heavily tinted with a green color. The text is overlaid on the right side of the image.

CHAPTER 6
**ADMINISTRATIVE
STEPS UPON YOUR
ARRIVAL**

THE FOLLOWING STEPS MUST BE CARRIED OUT IN THE ORDER GIVEN:

- obtain the Student Life and Campus Contribution certificate
 - register at the University
 - register with Social Security
- find permanent accommodation
 - open a bank account
- subscribe to a Civil Liability Insurance
 - subscribe to a housing insurance
- validate your VLS-TS Long Stay Visa if applicable
- apply for financial housing support on the CAF website

6.1 REGISTRATION AT UBS AND THE STUDENT LIFE AND CAMPUS CONTRIBUTION

Final registration takes place at the beginning of the academic year and is only possible for the course for which you have been accepted. In order to be definitively registered, you must first complete an administrative registration, which will be followed by a pedagogical registration. The pedagogical registration allows the administration to confirm with you the courses that you will follow during the year.

To carry out this administrative registration you will receive an appointment invitation for the beginning of September. You will also be sent, prior to the start of the Term, an invitation to attend a meeting concerning your courses. It is imperative that you attend both these meetings.

ALL ADMINISTRATIVE FORMALITIES TAKE PLACE AT THE UBS REGISTRAR'S OFFICES (IN FRENCH: "LES SCOLARITÉS")

Lorient

UFR LLSHS Paquebot
4 Rue Jean-Zay - 56100 LORIENT
+33 (0)2.97.87.29.29

IUT de Lorient
10 rue Jean-Zay - 56100 LORIENT
+33 (0)2.97.87.28.00

UFR SSI Lorient
2 cours Le Coat St Haouen - 56100 LORIENT
+33 (0)2.97.88.05.50

Vannes

UFR SSI Vannes
Campus Tohannic - Rue André Lwoff
56000 VANNES
+33 (0)2.97.01.70.70

IUT de Vannes
8 Rue Montaigne - BP 561
56017 VANNES CEDEX
+33 (0)2.97.62.64.64

Pontivy

IUT de Lorient à Pontivy
Allée des Pommiers
56300 PONTIVY
+33 (0)2.97.27.67.70

To complete your administrative registration, you need to bring with you

1. the enrolment form filled in by you and stamped by the International Office
2. the Student Life and Campus Contribution certificate
3. every supporting document mentioned in the enrolment form: proof of your identity, letter of acceptance from UBS, original copies of your degrees, last transcript of exam results, Test de Connaissance du Français certificate, image rights form, emergency contact form, Civil Liability Insurance

And to provide

4. the means to pay your tuition fees

So that the Registrar's office can issue

5. your IZLY student card (linked to your bank account)

University fees for 2020/21 (the amount may be subject to change)

Degree level	French Nationals, European students or non-Europeans with partial exemption	Non-Europeans student fees
Diploma of Technology, Bachelor Vocational Bachelor	170 €	2770 €
Master	243 €	3770 €
Engineering degree / ENSIBS	601 €	3770 €
PhD	380 €	380 €
Sport membership with SUAPS	20 €	20 €

STUDENT LIFE AND CAMPUS CONTRIBUTION (CVEC)

This contribution fee is to help finance the welfare, health, sports, and cultural activities on campus and to reinforce preventative and health education campaigns. From the start of the 2018 academic year it has been compulsory for all French and foreign students in initial training whether they study in traditional or apprenticeship mode to pay this tax before proceeding with any administrative registration. It is a pre-requisite to any registration, each and every year. Exchange students, refugees, students who have a scholarship based on social criteria or asylum seekers, as well as people under subsidiary protection are exempted from this fee.

You can pay the CVEC online by

- first registering on the website messervices.etudiant.gouv.fr
- then connect to the dedicated website cvec.etudiant.gouv.fr
- declare the town where you study and pay the CVEC with your credit or debit card (for the year 2020-2021, the amount of the contribution is 92 €)
- download and save the proof of payment, and keep it safely as you need to present it at the time of your registration

You can also pay in cash at the local post office by

- first registering on the website messervices.etudiant.gouv.fr
- then connect to the dedicated website cvec.etudiant.gouv.fr
- download a payment advice that you will use to make a cash payment at the post office
- the post office charges 5 euros for this service
- within two days you will receive a proof of payment by e-mail that you will need to download, save and keep safely as you need to present it at the time of your registration



You can also consult the Campus France tutorial: [The Student Life and Campus Contribution \(CVEC\) on YouTube](#)



6.1.1 ADDITIONAL INFORMATION

STUDENT CARD

You will receive your student card once all registration procedures are completed. Along with this card you will be given

- two registration certificates
- a receipt for all your student fees

This student card will allow you to benefit from many services including the university cafeterias and canteens, in the university library this card will serve as a reader's card for the university library, and give you access to the local municipal libraries in Lorient and Vannes. With this card you will also be able to benefit from discounts on

public transport, cinemas, concerts, etc. You can link your student card to a bank account in order to pay for meals at university restaurants or for photocopying services.

You must always have it with you, and if it is lost, stolen or destroyed report the loss to the police. Without the formal proof established by the gendarmerie or the police, the registrar's office will not be able to give you a new one.

For all your administrative and pedagogical questions, you benefit from a privileged contact: the registrar's office of your faculty.

6.2 REGISTRATION WITH SOCIAL SECURITY

Since 2018 all students are affiliated to the French Social Security. International students who have paid their tuition fees must register with Social Security: <https://etudiant-etranger.ameli.fr/#/>

Supporting documents needed: <https://www.ameli.fr/morbihan/assure/droits-demarches/etudes-stages/etudiant/french-social-security-registration-process-foreign-students>

- a copy of your passport
- a copy of your visa or residence permit
- your full birth certificate or equivalent document certified by the French consulate. The AMELI website above mentions the examples: a long copy of your birth certificate, a birth certificate showing your parents' information, an updated family record book «livret de famille», a certificate of marriage, or any other document issued by a consulate (original birth certificate, civil status certificate, etc.) authenticated by a legible stamp
- university enrolment certificate or your student card
- parental authorisation for people under 16 years of age
- bank account details - in French *Relevé d'Identité Bancaire* (RIB) and International Bank Account Number (IBAN)
- additional documents depending on the applicant's nationality

Caisse d'Assurance Maladie: DIAL 36 46

By registering on the Assurance Maladie website, you will be able to apply for a medical card called "La Carte Vitale". Its purpose is to facilitate access to healthcare throughout France and to avoid having to pay doctors' fees in advance or having to pay for medicine.

You can also consult the **Campus France tutorial: [Registration for Social Security on YouTube](#)**



IMPORTANT INFORMATION

Because Social Security does not cover all expenses, it is essential that you subscribe to a complementary health insurance (Mutual Insurance Companies).

Depending on the contract, student mutual insurance companies reimburse the costs not covered by the Assurance Maladie. Traditional student healthcare Mutuals are listed below. They will reimburse the difference for medical care, after you send them the invoices.

SMEBA : www.smeba.fr or LMDE : www.lmde.fr

6.2.1 ADDITIONAL INFORMATION



WHERE TO GET MEDICAL CARE?

Costs

- 25 euros for a general practitioner
- 30 euros for a specialist
- Starting from 40 euros and upwards for a gynaecologist, a psychiatrist, a heart specialist, an ophthalmologist

Fees are higher if the doctor makes house calls or out-of-hours care (at night, weekends, bank holidays...)

In France, you can choose your general practitioner (médecin traitant). It is best to choose one that has an agreement with the social security system (médecin conventionné) as in that case he or she charges the agreed rate of 25 euros, and mostly your assurance covers you for the agreed fees. If the doctor does not have an agreement that means he or she can charge more and that you may not be covered, so you will have to pay for the difference.

You can always look for general practitioners via French Yellow Pages online www.pagesjaunes.fr or via www.doctolib.fr

In France there are two types of doctors: generalists and specialists

- General practitioners take care of general issues such as having a cold, a sprained ankle, or gastroenteritis.
- Specialists have undertaken longer medical studies to specialise in certain aspects such as dental issues or allergies.

General practitioners near the University

LORIENT	PONTIVY	VANNES
Dr Bernard FAREL 26 rue Lanveur 56100 LORIENT Phone number: +33 (0)2.97.83.00.37	Dr Jocelyne SERVEL 29 quai Presbourg 56300 PONTIVY Phone number: +33 (0)2.97.25.05.95	Dr Olivier JOUANNET 77 rue Winston Churchill 56000 VANNES Phone number: +33 (0)2.97.46.44.40
Dr Eugène LE BIGOT Dr Jean-Pierre LE BERRE 1 rue Ventspils 56100 LORIENT Phone number: +33 (0)2.97.83.09.10		Dr Sébastien DEVULDER Parc Pompidou, Entrée 2 56000 VANNES Phone number: +33 (0)2.57.62.08.52

List of Specialists

LORIENT	PONTIVY	VANNES
DENTISTS		
Dr Xavier HUE 9 Rue de Merville 56100 LORIENT Phone number: +33 (0)2.97.37.31.40	Dr Claude BODENEZ 125 rue nationale 56300 PONTIVY Phone number: +33 (0)2.97.25.27.70	Dr David STOUFF 14 rue Ste Anne 56000 VANNES Phone number: +33 (0)2.97.40.29.30
Dr Gregoire DANCER 56 Rue de Lanveur 56100 LORIENT Phone number: +33 (0)2.97.35.35.35		
OPHTHALMOLOGISTS		
Dr Maryvonne BROUET 13 rue Victor Massé 56100 LORIENT Phone number: +33 (0)2.97.21.81.58	Dr Claire ROSPARS 21 Rue Georges Bizet 56300 PONTIVY Phone number: +33 (0)2.97.28.30.00	Dr Yann PROVAUX 33 rue Olivier de Clisson 56000 VANNES Phone number: +33 (0)2.97.54.16.57
Dr Alain MARECHAL 73 rue Lazare Carnot 56100 LORIENT Phone number: +33 (0)2.97.64.29.43	Ou rendez-vous au Centre Hospitalier du Centre Bretagne Site de Noyal Pontivy Kerio 56306 PONTIVY CEDEX à 5,10 km de Pontivy Phone number: +33 (0)2.97.79.00.00	Dr Xavier FLORENT 1Ter rue Docteur Joseph Audic 56000 VANNES Phone number: +33 (0)2.97.47.13.59
GYNAECOLOGISTS		
Dr Anne-Marie LE GUENNO 1 rue Docteur Bodélio 56100 LORIENT Phone number: +33 (0)2.97.64.00.41	Most gynaecologists Dr Lise CLÉMENT, Dr Martine QUÉNÉHERVÉ, Dr Maude BOURRIQUEN, Dr Ingrid HORNUNG work in the Centre Hospitalier du Centre Bretagne Site de Noyal Pontivy Kerio 56306 PONTIVY CEDEX 5,10 km away from Pontivy Phone number: +33 (0)2.97.79.00.00	Dr Josette LARTIGUE 106 avenue Marne 56000 VANNES Phone number: +33 (0)2.97.46.97.60

PHARMACIES (CHEMISTS)

In France, pharmacies are the only establishments authorized to sell medicine. Some pharmaceuticals are accessible without a doctor's prescription, but only prescribed medicine will be reimbursed. Pharmacists will often suggest a generic medicine instead of an original, because it is cheaper and has the same composition.

Pharmacies are closed on Sundays and during public holidays but there is always a pharmacy on duty locally, the name of which is indicated on the shop fronts of closed pharmacies or in the local press or online. You can also check which pharmacy is on duty by dialling 3237.

GOING TO HOSPITAL IN FRANCE

There are several distinct types of hospitals in France. The quality and standard of care should be the same everywhere, but one is reimbursed differently depending on where one goes.

If you go to a public hospital accredited by the state, then you are reimbursed 80 % the first month of hospitalisation and 100% for the second month.

If you go to a private hospital or clinic, you are only reimbursed 10% of the hospital fees. It is hence best to check prior to going.

Please note that if you are hospitalised you must pay a daily fee of 20 euros. This is not usually reimbursed unless you have a complementary health insurance.

UNIVERSITY RESIDENCE / STUDENT ACCOMMODATION

Obtaining a room in a CROUS (Regional Centre for Student Social Services), (In French: *Centre Régional des Œuvres Universitaires*) university residence is difficult because places are mainly reserved for French government scholarship holders. You can however apply via the CROUS in Rennes. This is a free service. In Vannes, the CROUS residence only accepts international students from Master 1 level.

To apply for a room in CROUS de Rennes, check this website:
www.crous-rennes.fr/logements/nos-residences/
then choose either Lorient or Vannes.

The CROUS also manages private sector accommodation offers via www.lokaviz.fr
This service is free.

You can also consult the Campus France tutorial: **Campus France scholarship holders: joining a CROUS on YouTube**
(only for Campus France scholarship holders)



6.3 FINDING ACCOMMODATION IN LORIENT, PONTIVY OR VANNES

Bear in mind that Vannes is more expensive than Lorient, and Pontivy is cheaper than both. During the summer, rental rooms or apartments are at a premium because it is the height of the tourist season.

Prices may vary depending on the location, size, number of rooms and amenities. In France, international students can also apply for financial assistance on the CAF website.

INDICATIVE PRICES (2020)

- Furnished room (with bed, desk, cupboard -10 to 15 m²): approx 250 to 350 € a month
- Studio (1 room appt with integrated kitchenette and bathroom/toilet): approx 300 to 400 € a month
- F1 or T1 (Main room, separate kitchen and bathroom): approx 400€ a month
- F2 or T2 (Sitting room and separate bedroom and bathroom): approx 500 € a month

ADVICE PRIOR TO RENTING

- Think about what you need in terms of
- type of accommodation (room or studio)
 - geographical distance
 - proximity to public transport
 - financial means
 - length of stay
 - whether you want to share or not

THE RENTAL DEPOSIT

To rent an apartment, landlords will ask you to provide a rental deposit or a guarantor. A guarantor (in French "caution solidaire" or "garant") is the person who, in a written document called a "guarantee deed", undertakes to pay the tenant's rental debts. These include the rent and charges, as well as any interest charged to the tenant for late payment of rental debts, and the costs of repairing damaged accommodation.

- The guarantor can either be
- a real person (a family member or a friend living in Europe)
 - a legal entity (Visale for instance)

If you do not have a guarantor, consult this website: www.visale.fr

As a European exchange student, you just need to provide proof of identity (i.e. a valid passport or ID card). If you are a non-European student, you need a valid visa and long-term residence permit.

To benefit from Visale, you need to be under 30 years old or be 30 years old as a student.

You can also consult the Campus France tutorial: **The Visale rental deposit on YouTube**



PRIVATE SECTOR ACCOMMODATION

In the private sector, it is the landlords who set the rent level. As with university halls of residence, a security deposit is required upon moving in (usually 2 months' rent). The deposit is returned at the end of the rental contract.

SHARING A FLAT

Sharing a flat ("*Colocation*" or "*Coloc*" in French) is a common and great way to share costs and make friends.

NB: Do make sure that your first and last name appear on the rental agreement ("*bail*" or "*contrat de location*" in French) to be able to ask for financial assistance (cf. 6.5 Financial Assistance).

You can register your interest and check flats available on the following websites:

www.appartager.com
www.lacartedescoloc.fr
www.leboncoin.fr
www.lokaviz.fr



ESTATE AGENTS OR COMPANIES WITH RENTAL DATABASES

Estate agents will charge you an agency fee of 1 or 2 months' rent. They will carry out the procedures and research for you. They will be your only contact throughout the period of occupation of the accommodation.

The companies that hold rental databases are not estate agencies; they only give you access to their computerised rental files in return for a right of access to the files. They do not help you with procedures or the search for accommodation.

CHEAP FURNITURE

As a student you can always find cheap furniture online on websites such as
Le Bon Coin : www.leboncoin.fr
Ou à Emmaüs : www.emmausvannes.org
ou www.emmaus-redene.com

6.3.1 IMPORTANT ADDITIONAL INFORMATION

ACCOMMODATION ASSISTANCE

If you ever have a problem with your accommodation you can contact ADIL (Association Départementale pour l'Information sur le Logement). ADIL can help you with:

- conflicts between owners and tenants
- rights and obligations of both parties
- establishing the price of various costs and repairs
- access to sets of keys
- entry and exit inspections
- insurance

Phone number: +33 (0) 2.97.47.02.30
www.adil56.org

ADIL Offices:

LORIENT

26 Rue de Clisson, 56328 LORIENT

Phone number:

+33 (0)8.10.25.56.10

Open Monday, Wednesday and Friday 9 am to 5 pm

VANNES

70 rue de Sainte Anne, 56318 VANNES Cedex

Phone number:

+33 (0)8.10.25.56.10

Open Monday to Friday 8 am to 5 pm

PONTIVY

6 rue Roger Cotte

56303 PONTIVY

Tel : +33 (0)8.10.25.56.10

Phone number:

+33 (0)8.10.25.56.10

Open Monday to Friday 8 am to 5 pm

YOUR OBLIGATIONS AS A TENANT

What you must do

- pay the rent
- repair anything you have broken
- use the premises responsibly and peacefully
- pay for tenant insurance
- keep the premises in a good condition and do not damage it

What you must not do

- you cannot modify the flat without the owner's written approval
- you cannot object to renovations the owner wishes to undertake
- you cannot transfer your tenancy agreement or sub-let the property without the owner's written approval

INSURING YOUR ACCOMMODATION

Owners will request a **multi-risk** house insurance policy. This is compulsory, regardless of your type of accommodation. It is a legal protection of the premises and for yourself, as it includes civil liability insurance. Student insurance societies, banks and insurance companies have varying prices (between 40 € and 100 € a year) for varying levels of policy cover (fire, theft, water damage, damage to adjacent buildings, civil liability) so do compare their offers carefully!

HOUSING TAX

This tax concerns lodgings occupied as of January 1st and is due for the whole year. It is a tax imposed by the local city council, department and region for operational aspects to fund activities such as rubbish removal, roads, street cleaning, security, street lighting etc. The amount varies based on the type and size of the accommodation and the occupant's status.

It does not concern

- residential rooms in university residences
- private rooms in private houses without a separate entry

Since 2018, it has gradually declined for 80% of French people, who will no longer pay it as of 2020. For the remaining 20% of households, the abolition of the housing tax will take place by 2023, when no household will pay housing tax on its main residence.

For more information, please visit:

www.economie.gouv.fr/particuliers/taxe-habitation

USEFUL TERMS

APL: Aide Personnalisée au Logement

ALS: Allocation de Logement Social

ADIL: Association Départementale pour l'Information sur le Logement

Bail: Lease or rental agreement

CC: Charges Comprises means utilities (such as electricity & water) are included

CAF: Caisse d'Allocations Familiales - Family Allowance Fund

COLOCATION / COLOC: Flatsharing with other people

CROUS: Centre Régional des Oeuvres Universitaires - Regional Student Services Centre

RIB: Relevé d'Identité Bancaire - Bank Account Details

6.4 OPENING A BANK ACCOUNT

All students should open a bank account when they arrive, as this is where financial assistance and grants might be credited. You should do so, even if you come only for three months, as this is where you will be reimbursed for your health expenditures or security accommodation rental deposit. If you work, it is where your salary will be paid into.

To open a bank account, you need a copy of your passport or identity card, a photocopy of your student card, proof of residence (an electricity or phone bill, rental invoice). This will enable you to obtain a bank card and a chequebook. The cost of some (debit) cards may vary from 15 up to 40 euros per year, or even more for a credit card. You can open a low-cost online bank account as well, but certain conditions apply.



6.5 FINANCIAL ASSISTANCE

THE FAMILY ALLOWANCE FUND (CAF)

International students benefit from the same financial assistance as French students. To benefit from this help, you must have a rental agreement in your name and not have any children. Non-European students also need a valid visa VLS-TS Long Stay Visa or a residence permit.

Once you have a rental agreement in your name you have three months to apply online for financial assistance via the following website: www.caf.fr

This financial assistance is called *Aide Personnalisée au Logement* (APL - the personal accommodation assistance) and concerns certain residential flats managed by CROUS or the "HLM" - social flat services.

Other assistance called *Allocation de Logement Social* (ALS - the social housing assistance) is also available under certain conditions. This assistance cannot be combined, it is either one or the other.

The amount of the allowance is based on the price of the rent and the student's resources. It is not automatically granted but allocated on a case-by-case basis.

You can also consult the Campus France tutorial: [Opening a bank account on YouTube](#)



TO APPLY FOR FINANCIAL ASSISTANCE, YOU MUST

- 1- already have your accommodation and a rental contract
- 2- be able to provide your address and the rent level
- 3- be registered with Social Security
- 4- have a French bank account in your name

6.6 VLS-TS VISA VALIDATION

You must validate your VLS-TS visa within 3 months of arriving in France. This entitles you to

1. lawfully remain in France for your visa's entire validity period
2. leave France, beyond the 3 months following your arrival, without applying for a visa to return

In other words, for the first 3 months after you arrive in France, you may freely leave France and come back, even without having validated your VLS-TS visa. **After these 3 months, if you have not validated your VLS-TS visa, you will need to apply for a new visa to re-enter the country.**

You can validate your VLS-TS visa online on the following website

<https://administration-etrangers-en-france.interieur.gouv.fr/particuliers/#/> and follow the validation steps:

1. enter the information on your visa: visa number, date of beginning and end of validity, date of issue, reason for stay
2. enter the additional information: family situation, telephone number, email address
3. indicate your date of arrival in France and your address in France
4. pay the Stay Tax of 75 euros (2020 price)

Done! Your visa is validated.



IMPORTANT ADVICE:
Always keep a printed copy of the validation receipt in your passport when you travel

Students with a VLS-TS Long Stay Visa must undertake a compulsory medical appointment at the Morbihan Anti Tuberculosis Centre, in French *Centre de lutte antituberculeuse* (CLAT) du Morbihan. The centre will receive students by appointment according to the guidelines of the UBS Preventative Health Care Services (SUMPPS).

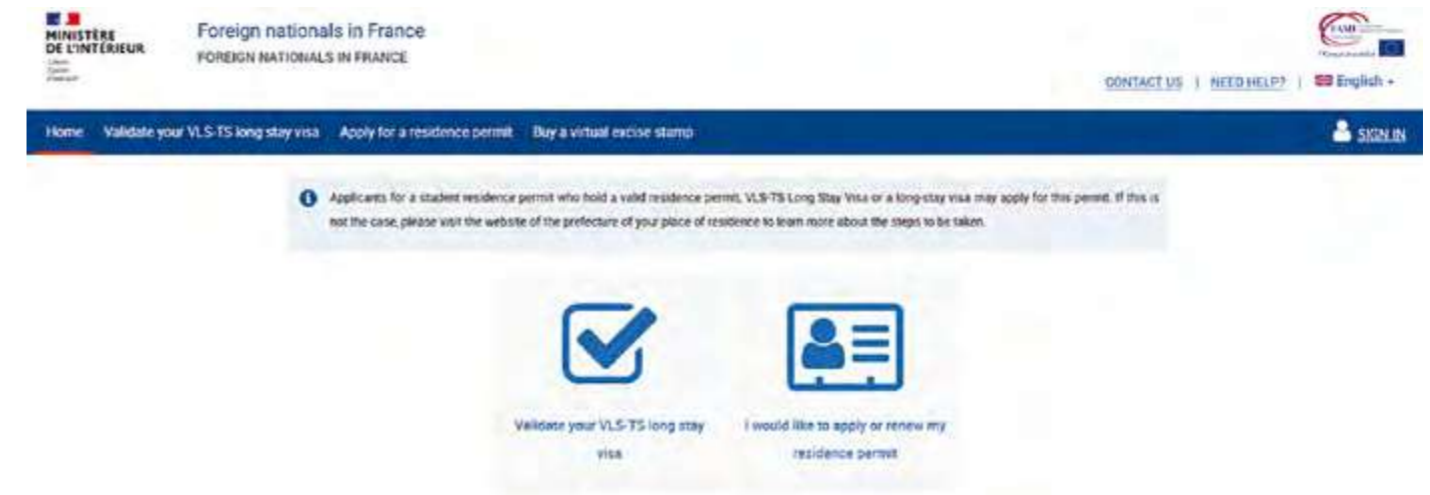
6.7 APPLY FOR A STUDENT RESIDENCE PERMIT ONLINE WITH ANEF-SÉJOUR

When your VLS-TS visa expires, if you wish to continue your studies in France, you must first apply for a residence permit (*Carte de Séjour Temporaire Étudiant*).

If you wish to stay longer to continue your studies you will need to apply for a multi-annual residence permit (*Carte de Séjour Pluriannuelle*). The multi-annual residence permit is issued to you under certain conditions and will have a period of validity that corresponds to the number of years remaining in the study programme in which you are enrolled. For example, if you have finished the first year of your undergraduate degree (licence) in France, you could receive a multi-annual residence permit valid for two years, i.e. until the end of the third year of the undergraduate degree.

If you are studying at a Grande École, your renewed residence permit will be valid until you obtain your diploma. If you wish to use this service, please follow the link www.administration-etrangers-en-france.interieur.gouv.fr

ANEF stands for *Administration Numérique pour les Étrangers en France* in French.



You can also consult the Campus France tutorial: [Submitting an online application for a residence permit](#)



Due to the ANEF-séjour, you no longer have to book an appointment at the *Préfecture* to give your documents. You only need to go to the *Préfecture* to collect your residence permit once it is ready. While waiting for your residence permit, you can check your application status online.

For users who encounter difficulties in submitting their application online, you can firstly contact the "*Centre de contact citoyen*", the Citizen Contact Centre (CCC) for any questions about your application or any problems encountered:

- by completing a contact form at <https://administration-etrangers-en-france.interieur.gouv.fr/>
- Or by calling 0806 001 620, the free of charge dedicated number with adapted teleassistance.

By 2022, the *Préfecture* will process all residence permit applications online.

For all visa or residence permit enquiries whilst in the Morbihan, you can contact the *Préfecture*: <http://www.morbihan.gouv.fr/Demarches-administratives/Accueil-des-etrangers>



CHAPTER 7
**DISCOVER
BRITTANY**

BRITTANY IS A VIBRANT, INNOVATIVE, AND ATTRACTIVE ECONOMIC REGION!

In economic terms, Brittany is a highly dynamic region of over 3.2 million people. "Bretagne attracts an average of 23,000 new inhabitants every year and retains its talents due to an exceptional quality of life". (Source: <https://www.invest-in-bretagne.org/why-bretagne/skills-talents/>)

Backed by a long-standing agricultural and industrial tradition and 1770 km of coastline, it has four administrative areas called départements in French (Finistère, Morbihan, Ile-et-Vilaine and Côtes d'Armor).

Well-connected and with major University cities like Rennes, Brest, Lorient and Vannes, it is home to 109 research laboratories, 10,000 researchers and over 16 innovation centres enabling the development of large-scale, ground-breaking projects. (Source: <https://www.invest-in-bretagne.org/why-bretagne/land-of-innovation/>)

Its population is highly qualified, and works essentially in food production and processing industries, naval industries, information technologies and communication (Cyber defence – electronics), new energy sources and biotechnologies.

BRITTANY EXCELS IN EACH OF THESE HIGH VALUE-ADDED SECTORS

In 2012 Brittany was

- no. 1 in the food industry in France
- no. 1 in naval shipbuilding in France
- the 5th biggest industrial region in France
- the 2nd biggest telecommunications centre in France
- the 5th biggest region in electronics in France

(Source : www.breizh-amerika.com/bzhbusiness.html#)

SMART SPECIALISATION STRATEGY (S3) FOR 2021-2027

Following on from that of the Breizh COP, the participative and collaborative process of building this S3 carried out throughout 2020 has enabled the identification of a transversal axis of support for the transitions in the economy, and five areas of strategic innovation (DIS):

- coastal and maritime Economy for a blue growth
- food Economy for everyone to eat healthily
- secure and responsible digital Economy
- health and well-being Economy for a better quality of life
- industrial Economy for intelligent manufacturing

The transversal axis aims to respond to the challenges of the transitions facing the economy:

- digital and industrial transition
- green and environmental transition
- social transition



TOURISM

The University of South Brittany (UBS) is located in the Morbihan administrative area. Morbihan means *little sea* in the local Breton language. The name refers to the Gulf of Morbihan, a natural sheltered area in Southern Brittany, well known for its many islands, fresh oysters, and recreational sailing activities all year round.

The Morbihan area has two distinct economies and cultures. The inland area focuses on agriculture and food processing, with many well-known legendary forests, rivers, chapels, canals and moors, while the coast focuses on industrial and recreational maritime activities, fisheries, seafood production, tourism, transport and logistics.

The variety of landscapes, amazingly rich heritage (spanning megaliths, middle age cobble stone villages, World War II museums, and numerous internationally celebrated festivals) all contribute to making the Morbihan area a well-known holiday destination!

OFFICE DE TOURISME DE LORIENT	OFFICE DE TOURISME DE PONTIVY COMMUNAUTÉ	OFFICE DE TOURISME GOLFE DU MORBIHAN VANNES TOURISME
Maison de la Mer Quai de Rohan 56100 LORIENT Phone number: +33(0)2.97.84.78.00 Email : accueil@lorienttourisme.fr www.lorienttourisme.fr	2 quai Niémen Péniche Duchesse Anne 56300 PONTIVY Phone number: +33(0)2.97.25.04.10 Accueil - Site Officiel de l'Office de Tourisme de Pontivy Communauté (tourismpontivycommunaute.com)	Quai Tabarly CS23921 - 56039 VANNES Phone number: +33(0)2.97.47.24.34 Email : tourisme@golfedumorbihan.bzh Golfe du Morbihan Vannes Tourisme Cap

If you wish to explore further afield check out:

Discover the 10 best things to do in Morbihan
or
The 10 Best destinations in Brittany

FURTHER SOUTH

- *Nantes and the fantastic world of Jules Vernes*
- Saint Nazaire: Where the biggest cruise ships are built: *Discover Airbus. Cruise liners shipyards and harbour terminals* or go through the history of *the great ocean liners at Escal'Atlantique*

FURTHER NORTH

Discover Brest THE maritime city in Brittany.

DO YOU LIKE ART?

- Visit *Pont-Aven* where the French Impressionists' School of Painting began
- or *Attend a Modern Art exhibition at The Helene & Edouard Leclerc Foundation in Landerneau*

ARE YOU A REAL HISTORY BUFF? TRAVEL THROUGH THE AGES WITHIN A 100 KMS

Explore the internationally *renowned megaliths in Carnac from 6500 BC*, or the *XVth century Duc of Rohan castle in Pontivy*.

Near Ploërmel you can also discover what life was like for the resistance movement during WW2 at *the Saint Marcel Museum* or travel through the *forest of Broceliande* where the legend of King Arthur is still well and truly alive!



DO YOU LIKE MUSIC?

Brittany is the biggest festival destination in Europe!!!

June to September:

La Gacilly International Open-Air Photo Exhibition: Brittany's most progressive and environmentally engaged Open Air Photo Exhibition (Free) (300 000 visitors each year)

July:

Brittany's most well-known festivals

- *Les Vieilles Charrues*
- *Vannes 5 days of Free Jazz Festival in town*
- *Fête du Bruit St Nolff Music Festival* (near Vannes)
- *Brest international Tall Ship Festival* (every 4 years)

August:

- *Festival du bout du monde International Folk Music Festival*
- *Lorient Interceltic Festival* (800 000 tourists)
- *Les galettes du monde* in Saint Anne d'Auray
- *St Nazaire's International Music Festival - Les Escales*



CHAPTER 8

EVERYDAY LIFE



8.1 GETTING AROUND

RAILWAY STATIONS

The train stations in Lorient, Vannes and Pontivy are located at the following addresses:

Lorient
Rue de Beauvais
56100 LORIENT

Vannes
Place de la Gare
Avenue Favrel et Lincy
56000 VANNES

Pontivy
Place de la Gare
56300 PONTIVY

NB: As a student you have access to a 25% discount if you are below 28 years of age and up to a 50 % discount if you buy a discount card “carte avantage jeune” for 49 euros. This card is valid for 1 year.

Book your tickets directly on
<https://www.sncf.com/en>

or with the National low-cost French subsidiary
OUI GO low cost trains

or for regional travel within Brittany on
<https://www.ter.sncf.com/bretagne>

You can book your tickets on your phone as well via the respective Mobile Apps



ITINERARIES TO GET TO UBS

IN VANNES

Vannes has two campuses:

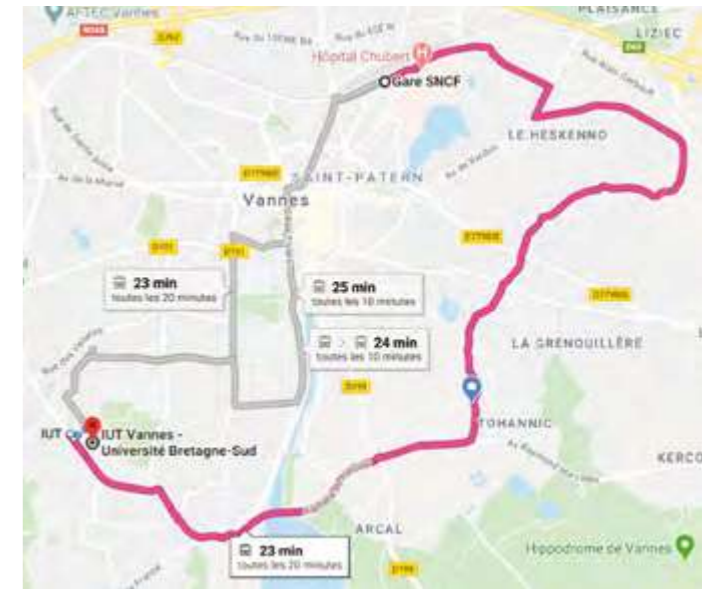
The UBS Tohannic Campus (Blue pin) is located in the South East of the town, while the Institute of Technology (Red pin) is in the South West of the town (see map below).
[Click here to access the Tohannic campus map \(Fr\)](#)

Catching a bus in Vannes

It takes 17 minutes to travel between the Railway station in Vannes and the UBS Tohannic campus by bus (Line 6a). It takes 23 minutes from the Railway station in Vannes to the Institute of Technology, rue Montaigne by bus. It takes ten minutes between both the Institute of Technology and the Tohannic campus with the buses running every twenty minutes. Students can buy a monthly or annual public transport card with **Kiceo**. Special student fares are available [here](#).

Vannes bus network

A more comprehensive map of all the bus routes in Vannes is available on line. You can also download the Kiceo App on your mobile phone. Vannes municipality **also offers a network of electrical bicycles** with docking stations at both campuses (docking stations numbers 5 and 8 at the bottom of the Map below).



IN LORIENT

The UBS Campus is located in the west of the town.

It takes 18 minutes by bus between the railway station and UBS and buses run every 12 minutes (lines T1 and T3). The bus stops at *Campus lettres*, *Bibliothèque universitaire* or the *Campus Sciences* stops. It takes approximately 30 minutes on foot.

Students can buy a monthly or annual public transport card with CTRL or go to their office in town at the bus station:

Gare d'Échanges, Cours de Chazelles, 56100 Lorient

To access the Lorient bus (and boat) network map [click here](#).

You can also [download the CTRL App](#) on your mobile phone.

Student special fares are available.

To access the Lorient campus map, click on CTRL.

[You can also access a map of Lorient bicycle paths here.](#)

And if you need to, you can always repair your bicycle at [the Syklett solidarity workshop](#).

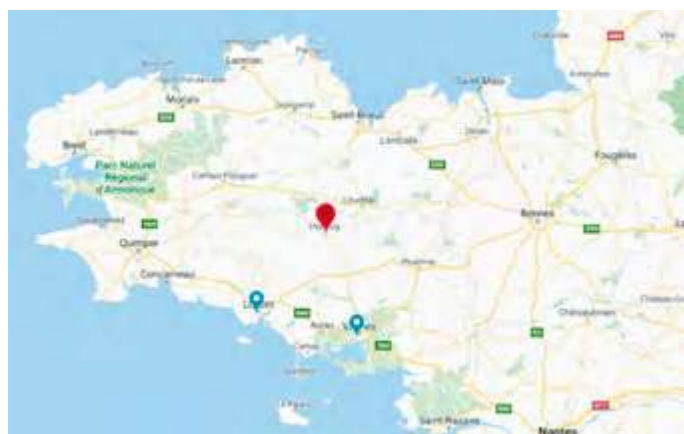


IN PONTIVY

Pontivy is located inland in the centre of Brittany at the crossroads of rivers and canals and at the heart of major rural food production and food processing industries.

The town is about an hour away from Vannes and Lorient by bus and two hours away from Rennes.

The UBS Institute of Technology in Pontivy is situated 4 km outside of Pontivy.



8.3 FRENCH EATING HABITS AND FOOD PRICES

French people usually have up to 4 meals a day (one optional, usually for small children).

Breakfast

It is taken in the morning and is the most important of the day. It is a sweet meal with bread, butter, jam and fruit or yogurts, cereals and hot tea, coffee, milk or chocolate or orange juice. French people also like croissants or small pastries on weekends, special occasions or when they have guests. NB: In Brittany, butter is often salted but you can also find unsalted butter.

Lunch

This meal is taken between 12 pm and 2 pm and is usually a savoury dish taken in company, university or school cafeterias, or in restaurants. You can either eat a traditional meal with a starter, main course (meat, fish, eggs) and dessert, or eat a quick, light meal (sandwiches, hot paninis, cold mixed salads, quiches).

Afternoon tea (optional)

Usually for children straight after school around 4 pm. It is a light refreshment as dinner is often later around 7 to 9 pm.

Dinner

It is often a 3-course meal, made at home, and an occasion to invite friends. In Winter people may have a hot soup as a starter. Nowadays there are also take away meals ordered and delivered at home. People usually have bottled or tap water and or wine with their meal.

FOOD PRICES (2021)

- Bread: baguette 250 grams 0.9€
- Butter: 250 g 2€
- 12 eggs: 2€ up to 4€ if free range or organic
- Orange juice: 2.5€ a litre
- Potatoes: 2€ for 2.5€/kg
- Pasta: 1.5€/500 g
- Rice: 1.7€/kg
- Tin of Tuna: 2€
- Apple/oranges: 2.6€/kg

WHERE TO DO YOUR SHOPPING?

Grocery Food is usually cheaper in supermarkets and fresh food at the weekly open markets. Most well-known supermarkets include Carrefour, Intermarché, Leclerc, Aldi, Auchan, Lidl, Super U, Géant Casino.

Check out the fresh food markets as they are usually a nice outing, and prices are cheaper towards the end of the market. In Lorient the fresh food markets are on Wednesday and Saturday mornings at the Merville hall in the city centre from 8 am to 1 pm. In Vannes, the market takes place on Wednesday and on Saturday mornings. In Pontivy, the fresh food market is rue Lorois on Saturdays from 8 am to 1 pm.

Organic shops also exist and are becoming common place but tend to be more expensive. Try to find a local organic cooperative producer selling local produce, if you want organic food, they may have less choice but are cheaper. You can also access organic food baskets delivered onsite on Tuesdays on the Vannes campus for 5 euros and 4,50 euros on Fridays in Lorient. Check out the UBS websites by typing "paniers bio" to fill in your order and check on pick up locations.

8.2 WORKING IN FRANCE

GENERAL RULES

Any foreigner from a country outside the European Union who holds a temporary residence permit or a long-stay student visa can work in France without having to apply for a work permit. The professional activity must be compatible with a student activity and must not exceed 964 hours per year or 20 hours per week.

RECRUITMENT

An employer can only hire a foreign student if he informs the prefecture beforehand, which has issued the student visa or the prefecture where the student lives. The employer must carry out this declaration procedure 2 (working) days prior to the student-employee starting his work activity.

This declaration must include a copy of the student's residence permit or long-stay visa, a description of the type of work to be performed, the length of the contract, the number of hours to be worked annually and the starting date of the contract. Heavy penalties apply, if the number of hours actually worked by the student is superior to the authorized annual limit. If the student does not respect the maximum amount of 964 hours per year, in addition to a fine, the prefecture can also cancel the student's visa.

ALGERIAN STUDENTS

Algerian students benefit from a special agreement between France and Algeria. Algerian students still need to be registered by their future employers with la Direction Régionale des Entreprises, de la Concurrence, de la Consommation, du Travail et de l'Emploi (DIRECCTE), the regional employment and consumer authorities located where the student lives. *Bretagne DIRECCTE is accessible here*. This formal request must include *une promesse d'embauche* (a written agreement to hire the student) or a work contract. The authorization allows the student to work up to 50 % of the professional branch normal annual hours.

WORKING AFTER FINISHING YOUR STUDIES

After the completion of your studies, if you wish to remain in France, you need to check if you are allowed to work on <https://www.service-public.fr/particuliers/vosdroits/F2229>. This will depend on the type of your French degree (often a master level degree is required), the type of work and salary level you wish to obtain, as well as the unemployment rate at the given time in France. To change visa status please visit: <http://www.morbihan.gouv.fr/Demarches-administratives/Accueil-des-etrangers/Changement-de-statut-pour-les-etudiants-diplomes>.



UNIVERSITY RESTAURANTS

In France, University Restaurants or RUs exist on all campuses.

In Lorient, the restaurant is located between the Faculty of Arts, Humanities and Social Sciences and the Faculty of Sciences. It can sit 800 people and is spread over 3 distinct locations:

- Chaplin space: salads, grilled meat, and fish
- Kiosk: sandwiches or take-aways
- Self-Service: classical meals or steak and fries

In Vannes, on the Tohannic campus the restaurant can sit 900 people. It is open Monday to Friday lunch time with a self-service area, a cafeteria, and a bistro (Brasserie in French).

The Institute of Technology has a cafeteria open all day Monday to Friday, with hot and cold drinks vending machines.

University restaurants are the best value for money as it usually only costs 3,30 € for a 3-course meal. There are also small cafeterias' open Mondays to Fridays where

you can find, sandwiches, bread, paninis, hot dishes, and salads. The Campus also has hot or cold drink vending machines in most buildings. If you wish you can always bring your own meal and find a microwave in one of the student dedicated eating rooms.

If you want to activate a cashless payment system on your student card download the Izly App and link it to your debit or credit card. This will save you time in the queue and you can always recredit your account via your phone.



8.4 PRACTICING YOUR RELIGION

LORIENT	PONTIVY	VANNES
<p>Communauté Israélite There are no synagogues in Lorient. Please refer to ACIL (Association Culturelle Israélite de Lorient) Phone number: +33 (0)2.97.84.92.75</p>	<p>Église Catholique Presbytère Notre Dame de Joie Place Bourdonnay du Clézio 56300 PONTIVY Phone number: +33 (0)2.97.25.02.53</p>	<p>Église Catholique Presbytère de l'Église Saint Vincent Ferrier 59 rue des Vénètes 56000 VANNES Phone number: +33 (0)2.97.63.22.03</p>
<p>Église Catholique La paroisse de St Louis/église Notre-Dame de Victoire Place Alsace-Lorraine 56100 LORIENT</p>		<p>L'Église de Jésus-Christ des saints des derniers jours 5 place Bir Hakeim Phone number: +33 (0)2.97.42.71.38</p>
<p>Eglise du Sacré-Coeur du Moustoir 22 rue François Le Leve 56100 LORIENT</p>		<p>Église évangélique pentecôtiste 11 rue du Capitaine Labordette Phone number: +33 (0)2.97.54.33.78</p>
<p>Église évangélique protestante 2 rue du Plénéno 56100 LORIENT Phone number: +33 (0)2.97.83.24.05 Mass: Saturdays 10:30 am</p>		<p>Église adventiste du septième jour 32 rue Claude Monet Phone number: +33(0)2.97.63.53.88</p>
<p>Église protestante réformée 23 bd de l'Eau courante 56100 LORIENT Phone number: +33(0)2.97.64.18.96 Mass: 10:30 am from September to June and 7pm during Summer</p>		<p>Église protestante réformée 28 rue du 8 mai 1945 Phone number: +33(0)2.97.42.41.00</p>
<p>Foi islamique Meetings take place at Cité Allende. For more information, please contact l'Association Culturelle et Islamique de Lorient Maison des associations 47P, 12 rue Colbert 56100 LORIENT</p>		<p>Diocèse de Vannes Petit Tohannic Phone number: +33 (0)2.97.68.30.60</p>
		<p>Église évangélique protestante 18 avenue Edouard Herriot Phone number: +33(0)2.97.47.16.75</p>
		<p>Association Culturelle des Turcs de l'Ouest (ACTO) 201 avenue de Verdun Phone number: +33(0)297.54.02.67</p>
		<p>France Mission Église Évangélique ZAC du Pouffanc 16 rue de Lorraine Phone number: +33 (0)2.97.47.63.98</p>
		<p>Église orthodoxe saint Basile et saint Alexis 53, boulevard de la Beaujoire 44300 Nantes Phone number: +33 (0)2 28 24 00 96</p>
		<p>Jewish people are attached to the Rabbi of Nantes. Synagogue: Consistoire Israélite de Nantes 5 impasse Copernic 44000 NANTES Phone number: +33 (0)2.40.73.48.92</p>



**FRENCH-ENGLISH
LEXICON**

	FRENCH - FRANÇAIS	ENGLISH - ANGLAIS
Common expressions Expressions courantes	Bonjour	Good morning
	Bonsoir	Good evening
	Salut	Hello! Hi there!
	Excusez-moi	Excuse-me
	Merci	Thank you
	De rien	You're welcome
Common questions Questions courantes	Où se trouve ?	Where is?
	Avez-vous ?	Have you got?
	Comment allez-vous ?	How are you?
	Combien ça coûte ?	How much does it cost?
	Parlez-vous anglais ?	Do you speak English?
	Pouvez-vous parler moins vite ?	Can you speak more slowly?
	Quelle heure est-il ?	What time is it?
Common answers Réponses courantes	Bien merci	Fine thank you
	Je ne comprends pas / Je comprends	I don't understand / I understand
	Enchanté	Nice to meet you
Food Alimentation	Pain	Bread
	Café	Coffee
	Thé	Tea
	Confiture	Jam
	Chocolat	Chocolate
	Pâtes	Pasta
	Riz	Rice
Sauce	Sauce	

	FRENCH - FRANÇAIS	ENGLISH - ANGLAIS
Fruit and Vegetables Fruits et légumes	Pomme	Apple
	Poire	Pear
	Banane	Banana
	Clémentine	Clementine (mandarine)
	Orange	Orange
	Fraise	Strawberry
	Tomate	Tomato
	Salade verte	Green salad
	Courgette	Zucchini (US)
	Concombre	Cucumber
	Pomme de terre	Potato
	Poivron	Sweet pepper, capsicum
	Carotte	Carrot
Drinks Boissons	Lait	Milk
	Jus d'orange	Orange juice
	Jus de fruits	Fruit juice
	Sirop	Syrup
	Bière	Beer
Cidre	Cider	

	FRENCH - FRANÇAIS	ENGLISH - ANGLAIS
Fresh food Rayon frais	Oeuf	Egg
	Beurre	Butter
	Yaourt	Yogurt
	Fromage	Cheese
	Crème	Cream
	Poisson	Fish
	Fruits de mer	Seafood
	Jambon	Ham
	Saucisse	Sausage
	Lardons	Pieces of diced bacon
	Steak haché	Mince meat
	Escalope de poulet	Chicken breast
	Escalope de dinde	Turkey breast
	Important places Lieux importants	Mairie
Hôpital		Hospital
Gare SNCF		Railway station
Gare routière		Coach / bus station
La poste		The post office
Pharmacie		Chemist's /drugstore
Coiffeur		Hairdresser
Pompiers		Fire service
Médecin		Doctor
Dentiste		Dentist

	FRENCH - FRANÇAIS	ENGLISH - ANGLAIS
Academic vocabulary Vocabulaire spécifique à l'université	Étudiant	Student
	Semestre	Semester
	Secrétariat	Secretary
	Accueil	Reception
	Salle de cours	Classroom
	Salle informatique	Computer room
	Examen / partiel	Examination / exam based on a module
	Travaux pratiques (TP)	Tutorial
	Bibliothèque universitaire (BU)	University library
	Université	University
	Faculté	Faculty
	Enseignant	Lecturer
	Professeur	Professor
	Télécharger un fichier	To download a file
	Plagiat	Plagiarism
	Mettre en ligne des cours / des fichiers	To upload a lecture / files
	Soumettre un devoir	To submit an assignment
	Examen en présentiel	A sit-down exam (face to face)
	Examen en ligne	Online exam
	Travaux de groupes	Group work
	Une clef USB	A flash drive / a USB stick / a memory stick
	La carte étudiante	Student card
	Un courriel	An email

	FRENCH - FRANÇAIS	ENGLISH - ANGLAIS
Everyday life Le quotidien	Carte postale	Postcard
	Timbre	Postage stamp
	Magazine	Magazine
	Journal	Newspaper
	Téléphone portable	Mobile phone
	Premiers secours	First aid
	Médicament	Medicine
	Pansement avec compresse	Dressing
	Pansement adhésif	Plaster / Band-Aid
	Arrêt de bus	Bus stop
	Ticket de bus	Bus ticket
	Un aller simple	A single (ticket)
	Un aller - retour	A return (ticket)
	Leisure and culture Loisirs et culture	Sport
Vélo		Bicycle
Piscine		Swimming pool
Courir		To run / jog
Cinéma		Cinema (GB) / Movie theater (US)
Film		Film / movie
Séance		A show
Théâtre		Theatre
Représentation		Performance
Musée		Museum
Tableau		Picture / painting
Sculpture		Sculpture
Chef d'oeuvre		Masterpiece



**EMERGENCY
NUMBERS**

IN CASE OF EMERGENCY
(ANYWHERE IN EUROPE):

112

SAMU URGENT MEDICAL AID SERVICES:

15 OR **112**
FROM A MOBILE

FIRE SERVICES:

18 OR **112**
FROM A MOBILE

POLICE:

17 OR **112**
FROM A MOBILE

PHARMACY ON DUTY:

3237 OR **WWW.3237.FR**

DOCTOR ON CALL:

02 97 68 42 42

SEA RESCUE OPERATIONS (CROSS D'ETEL):

196



INTERNATIONAL OFFICE
sai@univ-ubs.fr



www.univ-ubs.fr